



"AMF" - high pressure duct



- **High pressure duct fans**
- **3 models**
- **IPX4 - Splashproof**
- **For toilets, shower-rooms, bathrooms and utility rooms**
- **For walls, ceilings or windows (with window kit)**
- **Cord (Standard), Timer and Humidity Control**
- **Exceeds Building Regulations requirements (including new Document F)**

GENERAL

- high pressure duct fan to exhaust air and fumes through long lengths of rigid or flexible ducting
- hole diameter 4"/10cm
- integral backdraught shutter
- anti-vibration gasket
- for window installation use AWK10/4 or AWK10//4DG and remove backdraught shutter
- adjustable timer - 3-15 minutes
- dynamic humidistat with night time set back and anti-hunting device
- humidistat model with neon to show fan in manual operation
- easy plasterboard ceiling installation with (optional) Ceiling Ring
- easy wiring of "T" and "H2R" models with quick fit terminal block
- whisper quiet operation
- **IPX4 - Splashproof** - can safely be installed in Zones I and II

SPECIFICATION

- casings from shockproof and heat resistant plastics
- double insulated motors of shaded pole type mounted on self-lubricating, sealed ball bearings for long life
- motors incorporate thermal cut-out
- maximum ambient temperature - 40°C

COMPLY WITH

- EN60335-2-80
- EC Low Voltage Directive 73/23-93/68
- EC Directive EMC89/336
- CE marked

RANGE

- **AMF100T** -
overrun timer
- **AMF100C** -
cord or remote
- **AMF100HCT** -
humidistat, cord, timer, neon

SELV models available



Tel: +44(0)1494 522333
Fax: +44(0)1494 522337

Vectaire Ltd
Lincoln Road, Cressex Business Park
High Wycombe, Buckinghamshire, HP12 3RH

Email: sales@vectaire.co.uk
Web: www.vectaire.co.uk

TYPICAL SPECIFICATION

Supply and install a Vectaire AMF100T high pressure duct fan for toilets, shower-rooms, bathrooms and utility rooms as supplied by Vectaire Ltd, Lincoln Road, Cressex Business Park, High Wycombe, Bucks, HP12 3RH.

This fan is to be suitable for installation either in a ceiling, wall or window (with the appropriate accessories). The fan should be complete with an integral timer adjustable from between three and fifteen minutes, have an integral back-draught shutter and an anti-vibration gasket.

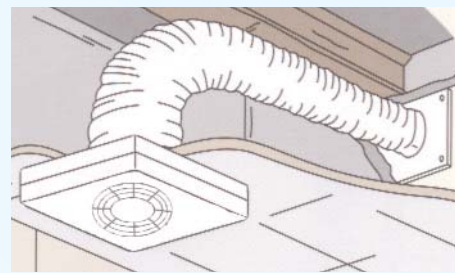
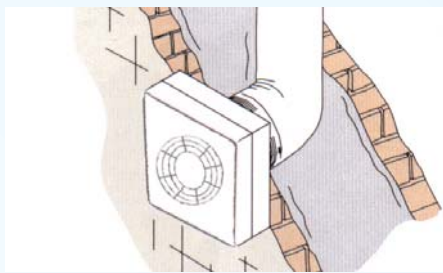
The fan casing should be made of shockproof and heat resistant plastics, contain a motor with sealed, self-lubricating ball bearings and be protected with a thermal cut-out.

The fan should be double insulated, and be suitable for installation for Zones I and II.

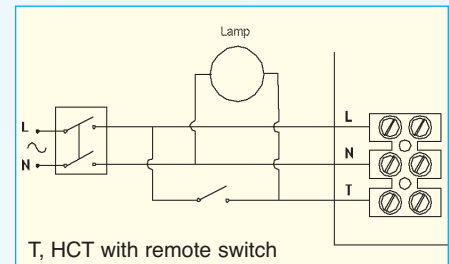
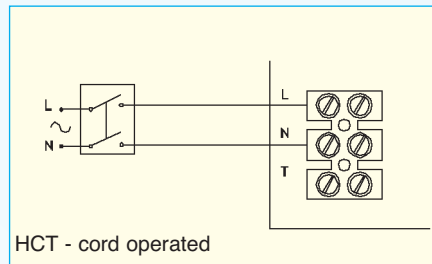
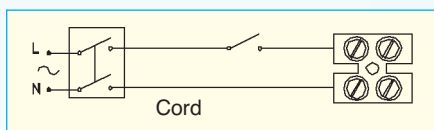
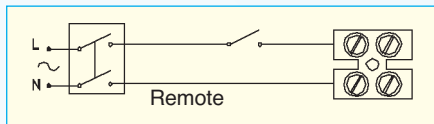
Fan to comply with all current IEE, EC and Building Regulations requirements for installation into a toilet, shower-room, bathroom or utility room.

TECHNICAL CHARACTERISTICS

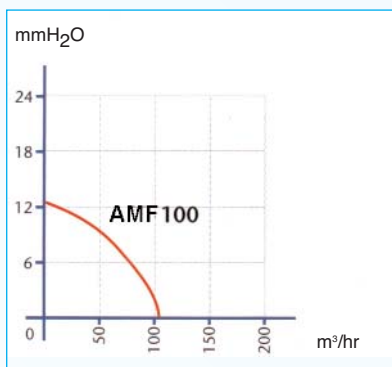
INSTALLATIONS



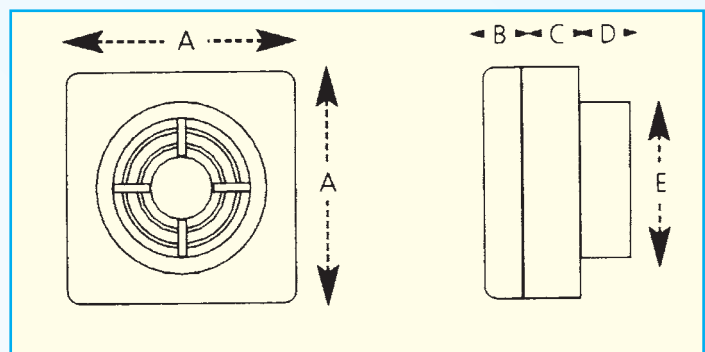
WIRING DIAGRAMS



PRESSURE CURVE



DIMENSIONS



	A	B	C	D	E
AMF 100s	150	38	50	47	98

TECHNICAL DATA

Model	m ³ /hr	litres/sec	Max mmH ₂ O	Max Pa	Volts	Hz	Watts	dbA	Hole dia mm	IPX4	Weight kg
AMF 100s	110	30	12	118	230	50	30	41	100	yes	0.9

ACCESSORIES



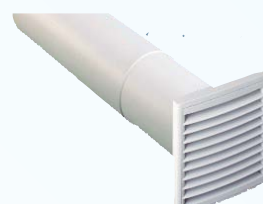
Fixed Grille



Gravity Grille



Wall Vent Kit



Wall Duct Kit



Ceiling Ring



Window Kit

FULL RANGE OF ACCESSORIES AVAILABLE INCLUDING FLEXIBLE AND FLAT DUCTING