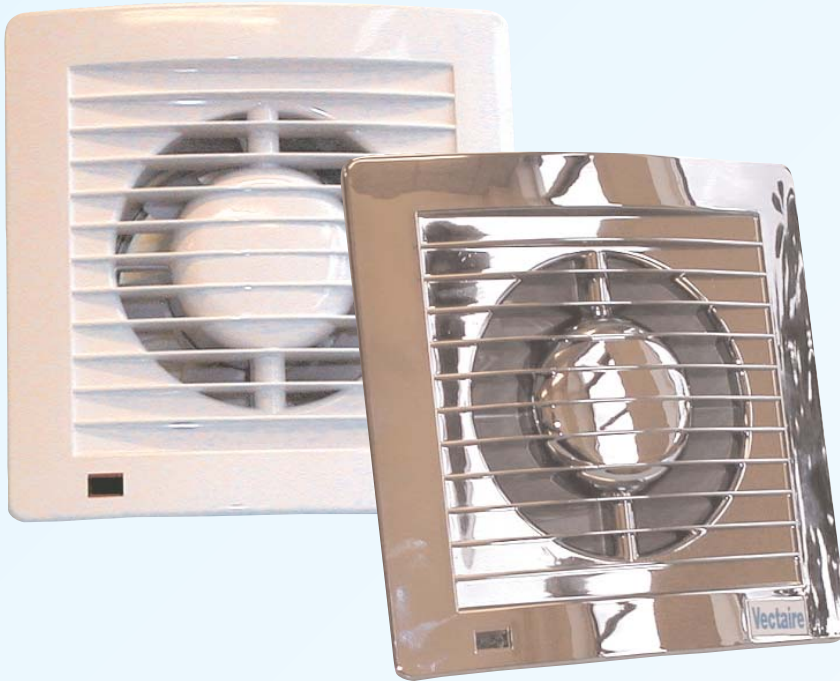




"AS" - slimline



- **Slimline axial fans**
- **Passive Infra Red Sensor**
- **White**
- **3 models**
- **IPX4 - Splashproof**
- **3 sizes for toilets, shower-rooms, bathrooms, utility rooms and kitchens**
- **For walls, ceilings or panels**
- **Fixed shutters**
- **Exceeds Building Regulations requirements (including new Document F requirements)**

GENERAL

- axial fans to exhaust air and fumes directly outside or through short lengths of ducting
- new, ultra modern, technically innovative
- streamlined for improved air flow
- indicator to show when operating
- incorporates backdraught shutter
- extremely quiet operation
- adjustable timer - 3-25 minutes
- dynamic humidistat with night time set back and anti-hunting device
- wiring can be surface mounted or recessed
- **IPX4 - Splashproof** - can safely be installed in Zones I and II

SPECIFICATION

- casings from shockproof, high quality technopolymer
- double insulated motors of shaded pole type mounted on self-lubricating, sealed ball bearings for long life
- energy efficient design
- motors incorporate thermal cut-out
- maximum ambient temperature - 40°C

COMPLY WITH

- EN60335-2-80
- EC Low Voltage Directive 73/23-93/68
- EC Directive EMC89/336
- CE marked
- Keymark Approved



Ultra low profile

TYPICAL SPECIFICATION

Supply and install an AS12Cr axial fan with a chromium front cover as supplied by Vectaire Ltd, Lincoln Road, Cressex Business Park, High Wycombe, Bucks, HP12 3RH.

The fan is to be suitable for installation either into a ceiling, wall or panel (with the appropriate accessories) There should be a neon on the front of the fan to indicate when it is operating.

The fan casing should be made of shock-proof, high quality technopolymer, contain a motor with sealed, self-lubricating bearings, and be protected with a thermal cut-out..

The fan should be double insulated and be suitable for installation into Zones I and II.

The fan is to be CE marked and comply with current EC Low Voltage Directive EMC89/336 and with BSEN60529. The fan should finally comply with Building Regulations requirements for installation into a utility room.

RANGE

White:

- **AS10, 12, 15** - standard models
- **AS10T, 12T, 15T** - overrun timer
- **AS10HT, 12HT, 15HT** - humidistat, timer

Chromium:

- **AS10Cr, 12Cr 15Cr** - standard models
- **AS10TCr, 12TCr, 15TCr** - overrun timer
- **AS10HTCr, 12HTCr, 15HTCr** - humidistat, timer



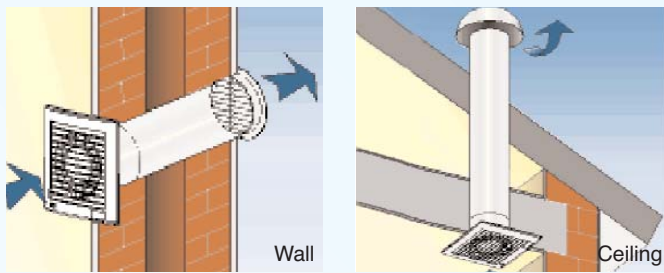
Tel: +44(0)1494 522333
Fax: +44(0)1494 522337

Vectaire Ltd
Lincoln Road, Cressex Business Park
High Wycombe, Buckinghamshire, HP12 3RH

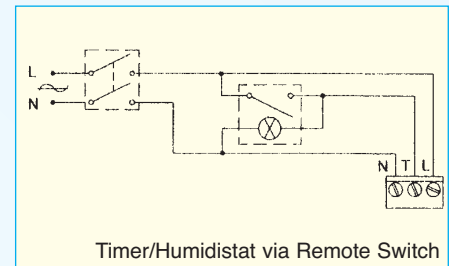
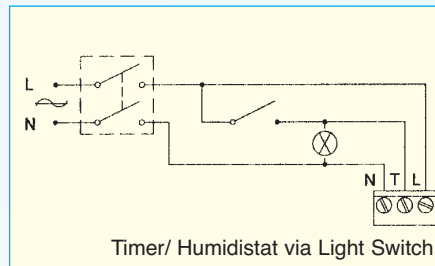
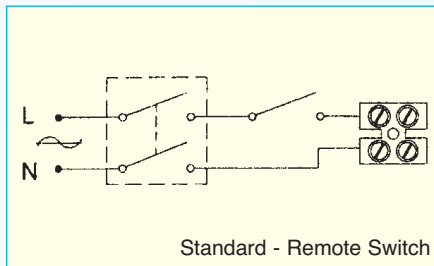
Email: sales@vectaire.co.uk
Web: www.vectaire.co.uk

TECHNICAL CHARACTERISTICS

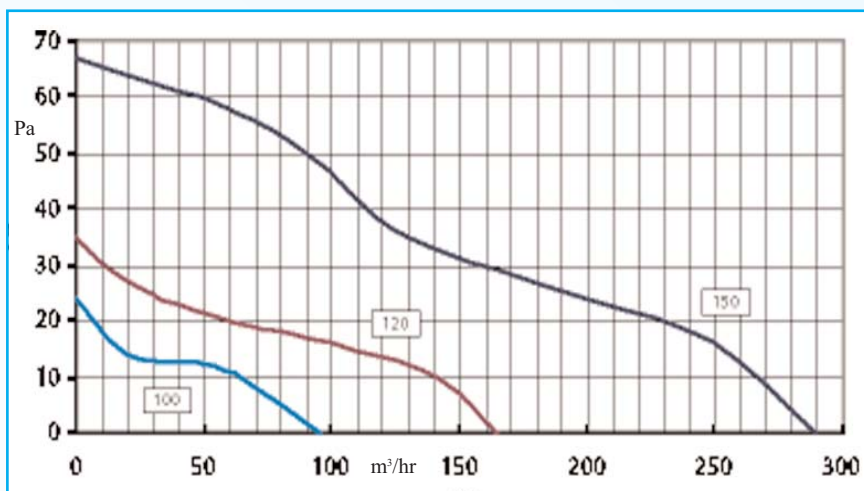
INSTALLATIONS



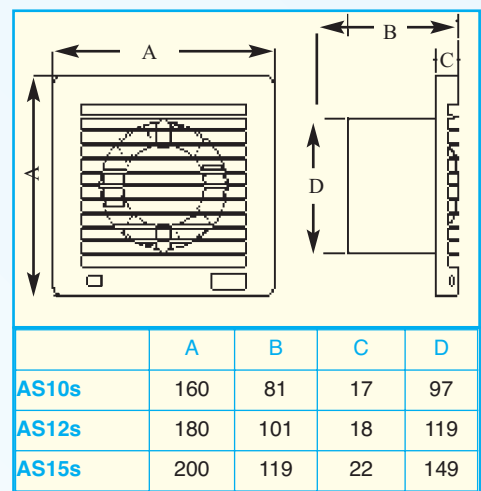
WIRING DIAGRAMS



PRESSURE CURVE



DIMENSIONS



TECHNICAL DATA

Model	m³/hr	litres/sec	Max mmH ₂ O	Max Pa	Volts	Hz	Watts	dbA	Hole dia mm	IPX4
AS 10	95	26	2.5	24	240	50	11	40	100	yes
AS 12	165	46	3.6	35	240	50	15	42	120	yes
AS 15	290	81	6.8	67	240	50	26	49	150	yes

ACCESSORIES



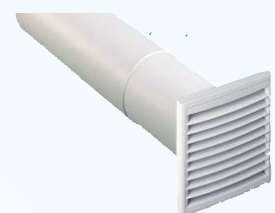
Fixed Grille



Gravity Grille



Wall Vent Kit



Wall Duct Kit

FULL RANGE OF ACCESSORIES AVAILABLE INCLUDING FLEXIBLE AND FLAT DUCTING