

# "CIL" - in-line centrifugal



- **Centrifugal fans for domestic, commercial or industrial use**
- **In-line**
- **3 Technopolymer cased models**
- **10 metal cased models**
- **Low noise levels**
- **Suitable for continuous running**
- **Exceeds Building Regulations requirements**

## GENERAL

- In-Line centrifugal fans
- For domestic, commercial and industrial use
- 3 sizes and capacities with technopolymer casing (P) models.
- 7 sizes and 10 capacities with steel casing
- Airflow from 200-1750m<sup>3</sup>/hr (0.055 to 0.49m<sup>3</sup>/sec)
- High performance extract capacities and pressure.
- Backward curved blades to ensure lowest possible sound and to develop high static pressure.
- Suitable for continuous running
- Fixing brackets included
- Can be used with rigid or flexible ducting
- Can be used with variable speed controller
- Easy to install.
- Easy to maintain
- "P" models protected by IPX2 rating - all other models to **IPX4 - Splashproof**

## SPECIFICATION

- "P" models have casings from robust self-extinguishing plastic
- Other models have heavy-gauge, spun steel housing with baked epoxy finish inside and outside
- Electrical connections in external plastic box protected to IP54
- "P" model motors of shaded pole type mounted on self lubricating, sealed for life bearings for long life and quiet running
- Other motors are external rotor type mounted on self lubricating, sealed for life bearings for long life and quiet running
- External rotor motor with thermal overload and protection ("P" models have thermal cut out).
- Fan and motor assembly balanced for quiet and vibration free operation
- For use in ambient temperatures ranging from -20°C to +60°C

## COMPLY WITH

- EN60335-2-80
- EN60335-2-31 ("P" Models only)
- EC Low Voltage Directive 73/23-93/68
- EC Directive EMC89/336
- CE marked
- Key marked

## TYPICAL SPECIFICATION

Supply and install a CIL150B centrifugal in-line fan as supplied by Vectaire Ltd, Lincoln Road, Cressex Business Park, High Wycombe, Bucks, HP12 3RH.

This fan is to be suitable for installation in commercial premises in-line in ducting 6"/15cm diameter.

It is to be operated by a remote variable speed controller, come complete with fixing brackets and with housing from heavy-gauge, spun steel with a baked epoxy finish both inside and out.

The motor should of a durable external rotor style provided with thermal reset overload protection, and be mounted on self lubricating, sealed for life bearings maintenance free operation and quiet running. The fan should have an external electrical connection box protected to IP54, and the fan itself should be protected to IPX4.

Fan to comply with all current IEE, EC and Building Regulations requirements and be keymark approved.

## RANGE

- **CIL100P** - 4"/10cm technopolymer
- **CIL125P** - 5"/12cm technopolymer
- **CIL150P** - 6"/15cm technopolymer
- **CIL100B** - 4"/10cm metal
- **CIL125B** - 5"/12cm metal
- **CIL150B** - 6"/15cm metal
- **CIL200A** - 8"/20cm metal
- **CIL200B** - 8"/20cm metal
- **CIL250** - 10"/25cm metal
- **CIL315A** - 12"/31cm metal
- **CIL315B** - 12"/31cm metal
- **CIL355A** - 14"/35cm metal
- **CIL355B** - 14"/35cm metal



Tel: +44(0)1494 522333  
Fax: +44(0)1494 522337

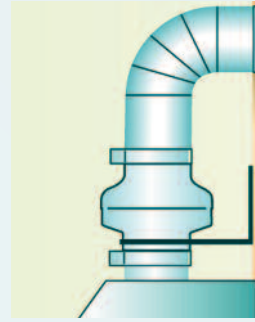
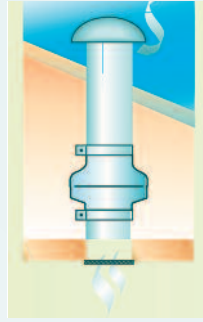
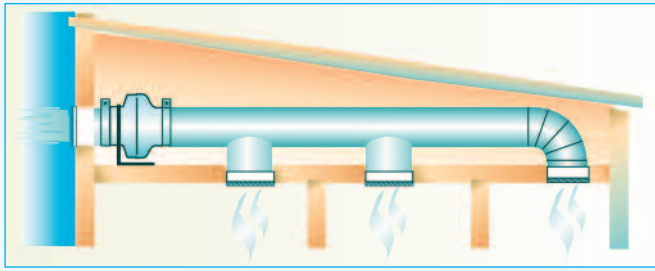
Vectaire Ltd  
Lincoln Road, Cressex Business Park  
High Wycombe, Buckinghamshire, HP12 3RH

Email: sales@vectaire.co.uk  
Web: www.vectaire.co.uk



## TECHNICAL CHARACTERISTICS

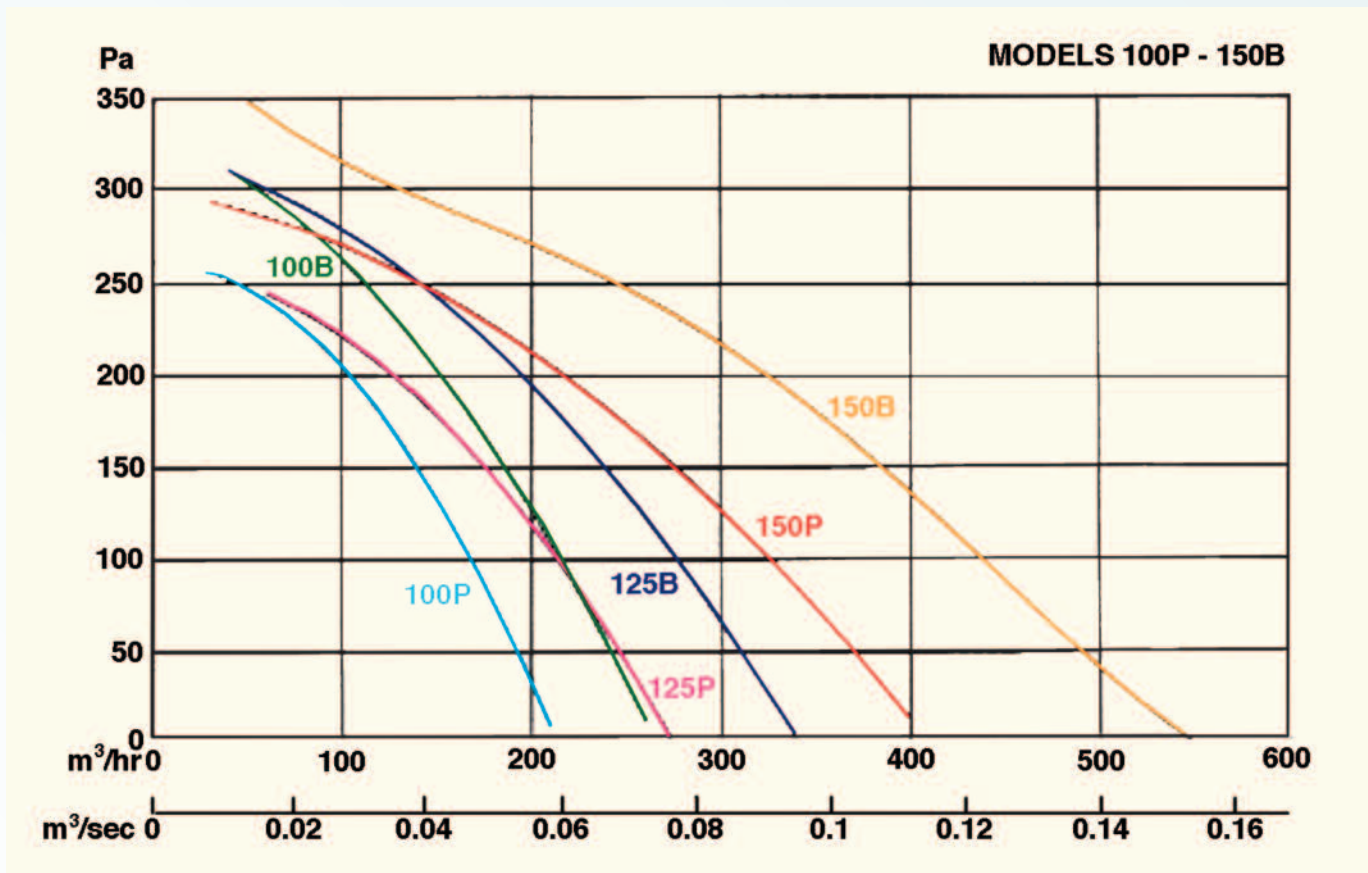
### INSTALLATION



### DIMENSIONS

| Model   | Amm | Bmm | ØCmm | ØDmm | Emm | Fmm | kg   |
|---------|-----|-----|------|------|-----|-----|------|
| CIL100P | 238 | 25  | 98   | 212  | -   | -   | 1.5  |
| CIL125P | 238 | 25  | 123  | 212  | -   | -   | 1.5  |
| CIL150P | 232 | 28  | 147  | 253  | -   | -   | 2    |
| CIL100B | 215 | 12  | 245  | 98   | 24  | 38  | 3    |
| CIL125B | 214 | 11  | 245  | 122  | 24  | 38  | 3    |
| CIL150B | 230 | 22  | 333  | 148  | 22  | 38  | 5    |
| CIL200A | 230 | 22  | 333  | 198  | 27  | 38  | 5    |
| CIL200B | 230 | 22  | 333  | 198  | 27  | 38  | 5    |
| CIL250  | 230 | 22  | 333  | 248  | 35  | 38  | 5    |
| CIL315A | 297 | 30  | 404  | 314  | 52  | 38  | 8    |
| CIL315B | 308 | 30  | 404  | 314  | 52  | 38  | 9    |
| CIL355A | 400 | 44  | 484  | 355  | 50  | 38  | 11.8 |
| CIL355B | 400 | 44  | 484  | 355  | 50  | 38  | 14.1 |

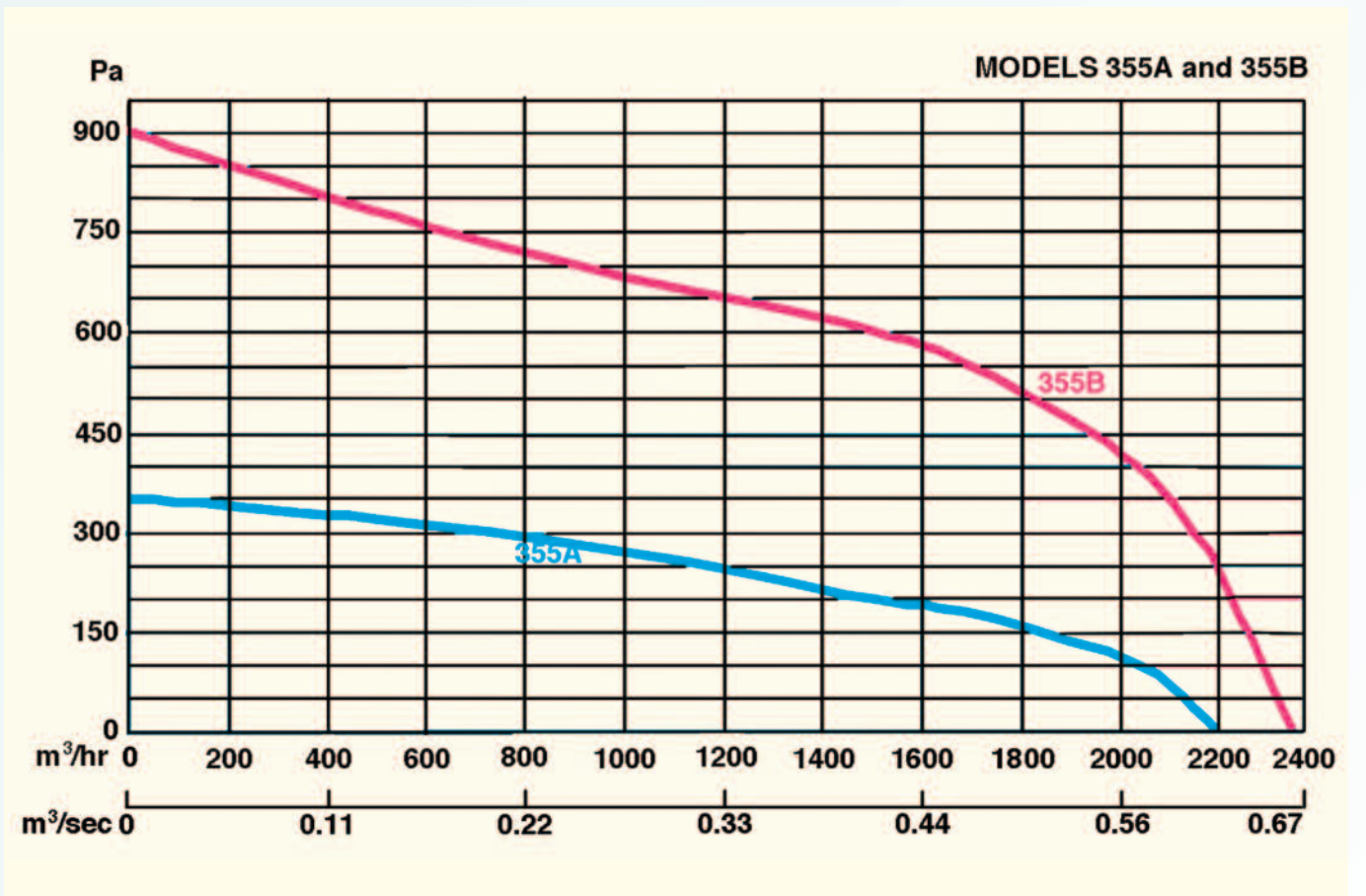
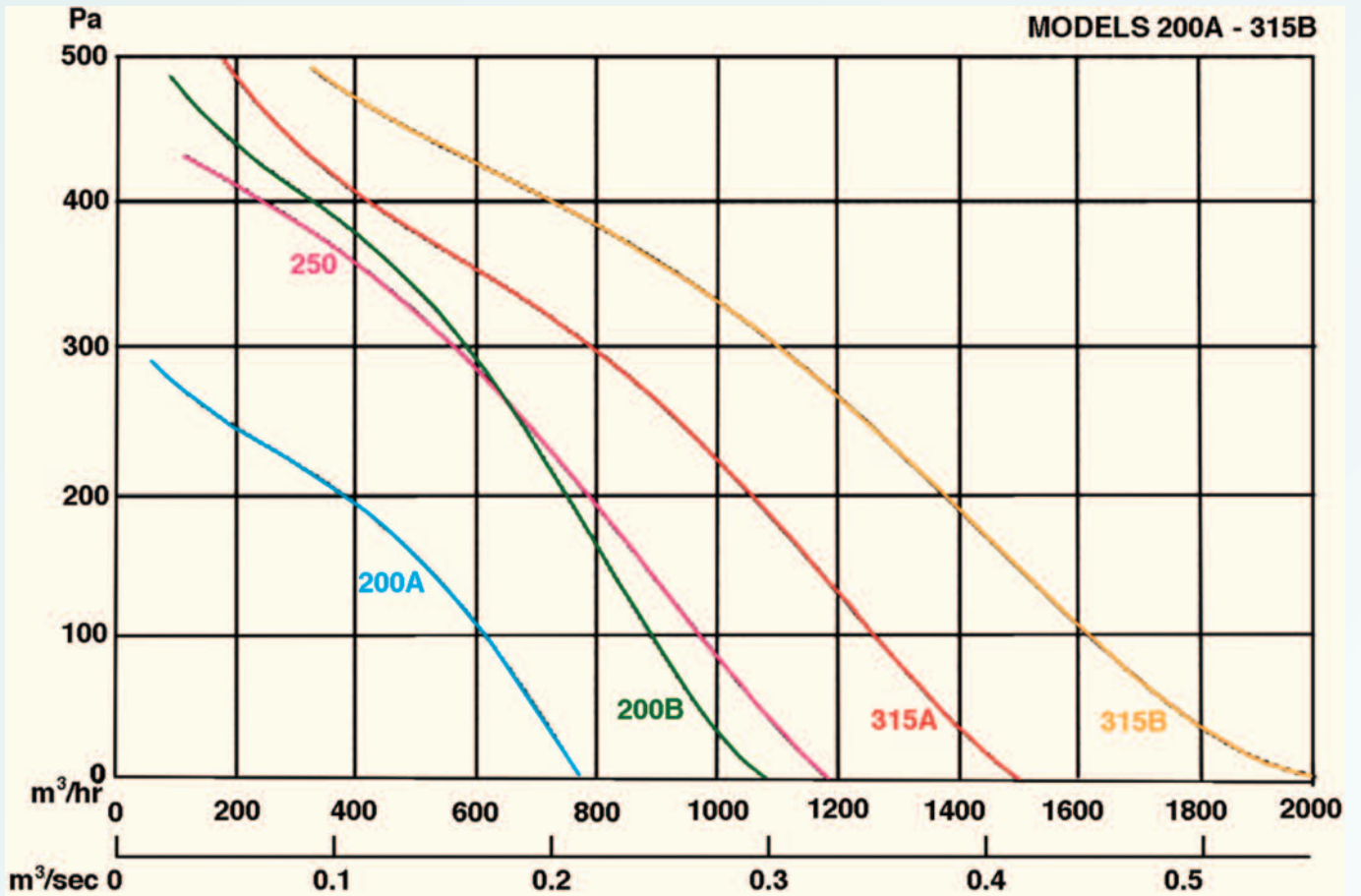
### PRESSURE





# TECHNICAL CHARACTERISTICS

## PRESSURE





## TECHNICAL CHARACTERISTICS

### GENERAL TECHNICAL

| Model   | Size |    | Power<br>kw | Current | r.p.m | Speed<br>Controller | Breakout<br>Sound<br>Level<br>dba @ 3m | Sound Power Level db  |     |     |     |      |      |      |      |
|---------|------|----|-------------|---------|-------|---------------------|--|-----------------------|-----|-----|-----|------|------|------|------|
|         | ins  | cm |             |         |       |                     |  | Mid Octave Bands (Hz) |     |     |     |      |      |      |      |
|         |      |    |             |         |       |                     |  | 63                    | 125 | 250 | 500 | 1000 | 2000 | 4000 | 5000 |
| CIL100P | 4    | 10 | 0.056       | 0.3     | 2700  | VC1                 | 43                                     | 31                    | 34  | 35  | 36  | 40   | 39   | 41   | 34   |
| CIL125P | 5    | 12 | 0.056       | 0.3     | 2680  | VC1                 | 44                                     | 32                    | 35  | 37  | 38  | 43   | 41   | 42   | 36   |
| CIL150P | 6    | 15 | 0.064       | 0.3     | 2500  | VC1                 | 46                                     | 33                    | 35  | 38  | 39  | 46   | 44   | 46   | 40   |
| CIL100B | 4    | 10 | 0.065       | 0.3     | 2530  | VC1                 | 46                                     | 32                    | 35  | 37  | 38  | 43   | 41   | 42   | 36   |
| CIL125B | 5    | 12 | 0.067       | 0.3     | 2400  | VC1                 | 45                                     | 33                    | 36  | 38  | 39  | 43   | 41   | 43   | 38   |
| CIL150B | 6    | 15 | 0.073       | 0.4     | 2450  | VC1                 | 45                                     | 36                    | 39  | 41  | 47  | 51   | 50   | 51   | 40   |
| CIL200A | 8    | 20 | 0.080       | 0.4     | 2450  | VC1                 | 50                                     | 32                    | 35  | 41  | 44  | 50   | 49   | 48   | 40   |
| CIL200B | 8    | 20 | 0.148       | 0.7     | 2700  | VC1                 | 51                                     | 37                    | 43  | 42  | 45  | 50   | 49   | 48   | 40   |
| CIL250  | 10   | 25 | 0.182       | 0.8     | 2550  | VC1                 | 52                                     | 35                    | 39  | 44  | 47  | 52   | 51   | 49   | 41   |
| CIL315A | 12   | 31 | 0.180       | 0.8     | 2645  | VC1                 | 52                                     | 34                    | 38  | 40  | 44  | 49   | 51   | 47   | 39   |
| CIL315B | 12   | 31 | 0.278       | 1.3     | 2630  | VC4M                | 56                                     | 35                    | 40  | 41  | 47  | 50   | 52   | 49   | 41   |
| CIL355A | 14   | 35 | 0.248       | 1.12    | 1330  | VC4M                | 57                                     | 36                    | 39  | 42  | 43  | 50   | 53   | 50   | 40   |
| CIL355B | 14   | 35 | 0.630       | 2.82    | 2560  | VC4M                | 67                                     | 39                    | 42  | 43  | 47  | 51   | 55   | 52   | 41   |

### PERFORMANCE

| Model   | Max Airflow        |        | m <sup>3</sup> /sec at Pa |       |       |       |       |       |       |       |       |       |       |       |       |       |       |
|---------|--------------------|--------|---------------------------|-------|-------|-------|-------|-------|-------|-------|-------|-------|-------|-------|-------|-------|-------|
|         | m <sup>3</sup> /hr | c.f.m. | 0                         | 25    | 50    | 75    | 100   | 125   | 150   | 175   | 200   | 250   | 300   | 350   | 400   | 450   | 500   |
| CIL100P | 210                | 124    | 0.058                     | 0.056 | 0.054 | 0.051 | 0.047 | 0.045 | 0.038 | 0.035 | 0.026 | 0.009 | -     | -     | -     | -     | -     |
| CIL125P | 280                | 165    | 0.078                     | 0.073 | 0.067 | 0.063 | 0.058 | 0.053 | 0.048 | 0.043 | 0.038 | 0.017 | -     | -     | -     | -     | -     |
| CIL150P | 400                | 235    | 0.111                     | 0.107 | 0.104 | 0.098 | 0.093 | 0.086 | 0.077 | 0.068 | 0.058 | 0.034 | 0.009 | -     | -     | -     | -     |
| CIL100B | 260                | 153    | 0.072                     | 0.070 | 0.067 | 0.064 | 0.061 | 0.057 | 0.053 | 0.047 | 0.042 | 0.028 | 0.011 | -     | -     | -     | -     |
| CIL125B | 340                | 200    | 0.094                     | 0.091 | 0.086 | 0.081 | 0.076 | 0.072 | 0.069 | 0.061 | 0.054 | 0.037 | 0.014 | -     | -     | -     | -     |
| CIL150B | 550                | 324    | 0.153                     | 0.144 | 0.136 | 0.129 | 0.123 | 0.114 | 0.105 | 0.099 | 0.092 | 0.068 | 0.035 | 0.014 | -     | -     | -     |
| CIL200A | 770                | 453    | 0.214                     | 0.206 | 0.198 | 0.184 | 0.169 | 0.156 | 0.141 | 0.127 | 0.109 | 0.041 | 0.017 | -     | -     | -     | -     |
| CIL200B | 1110               | 652    | 0.308                     | 0.286 | 0.265 | 0.256 | 0.245 | 0.238 | 0.230 | 0.220 | 0.210 | 0.184 | 0.164 | 0.130 | 0.085 | 0.047 | 0.026 |
| CIL250  | 1200               | 706    | 0.333                     | 0.314 | 0.295 | 0.281 | 0.268 | 0.257 | 0.245 | 0.233 | 0.222 | 0.193 | 0.150 | 0.113 | 0.062 | 0.031 | -     |
| CIL315A | 1500               | 882    | 0.417                     | 0.399 | 0.382 | 0.366 | 0.350 | 0.336 | 0.321 | 0.307 | 0.295 | 0.261 | 0.221 | 0.167 | 0.116 | 0.079 | 0.048 |
| CIL315B | 2000               | 1176   | 0.556                     | 0.523 | 0.490 | 0.468 | 0.446 | 0.432 | 0.417 | 0.401 | 0.385 | 0.334 | 0.309 | 0.261 | 0.215 | 0.119 | 0.091 |
| CIL355A | 2170               | 1280   | 0.600                     | 0.590 | 0.570 | 0.560 | 0.540 | 0.510 | 0.480 | 0.440 | 0.390 | 0.290 | 0.200 | -     | -     | -     | -     |
| CIL355B | 2360               | 1392   | 0.660                     | 0.650 | 0.640 | 0.630 | 0.625 | 0.620 | 0.615 | 0.610 | 0.600 | 0.590 | 0.580 | 0.570 | 0.560 | 0.550 | 0.530 |

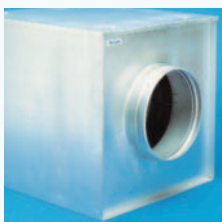
### ACCESSORIES



Protection Guard



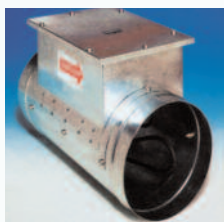
Duct Clamps

Backdraught  
Shutters

Filter Cassettes



Silencers



Duct heaters

FULL RANGE OF ACCESSORIES AVAILABLE INCLUDING FLEXIBLE AND FLAT DUCTING

Tel: +44(0)1494 522333  
Fax: +44(0)1494 522337

Vectaire Ltd  
Lincoln Road, Cressex Business Park  
High Wycombe, Buckinghamshire, HP12 3RH

Email: sales@vectaire.co.uk  
Web: www.vectaire.co.uk