

'Heatrec 1003'

SINGLE ROOM HEAT RECOVERY

3 speed centrifugal unit for any domestic wet room

- Low level continuous ventilation
- High performance and efficiency
- Energy saving ventilation
- Extremely low running costs
- Low carbon footprint



ventilation

NEW





energy efficient
environmentally friendly
economical

75%
Thermal
Efficiency



innovative - elegant
technically superior
problem solving

single room heat recovery
versatile model range
ventilation for the future

3 heat recovery tube lengths
timer and humidity control options

total solution to humidity
and condensation

disperses condensation
fights pollution
improves air quality

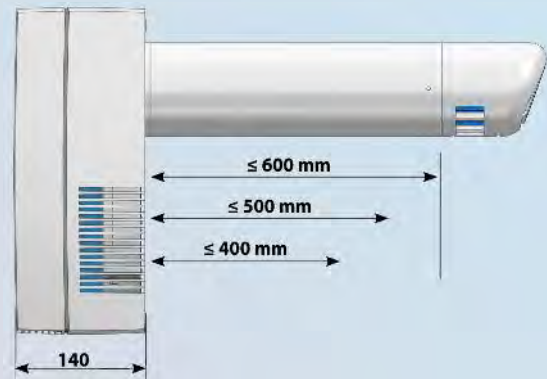
Single Room Heat Recovery Heatrec 1003



easy installation
100mm dia hole for all sizes

easy to install in any wall
can be rotated to 4 positions
for new build or refurbishment

tube heat recovery cell
available in 3 lengths
400, 500 and 600mm



heat recovery tube with:
condensate drainage
weather louvre

with pull cord
summer mode & integral frost-stat
timer & humidity control options



Vectaire's innovative Single Room Heat Recovery unit has been designed as an easy solution to the problems of poor air quality in any bathroom, kitchen, shower-room, utility room or toilet.



In order to combat rising energy costs house builders have made strenuous efforts to reduce drafts and air leakage, thus reducing heat loss and carbon emissions.



However an unwelcome result of this improved insulation has been to reduce indoor air quality - pollutants which flew straight out the open window now recirculate around the home and can contribute to respiratory and allergy problems.

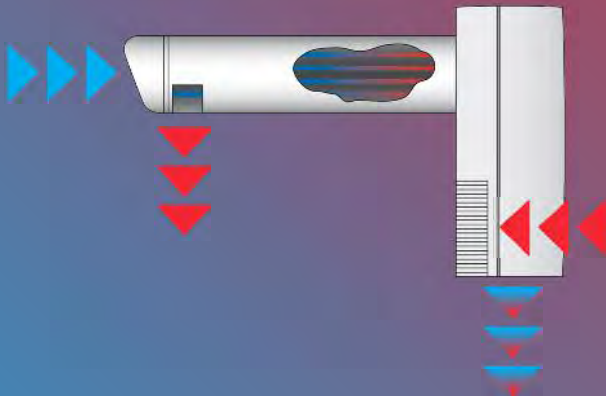
Lack of proper ventilation can also create excessive condensation (often hidden in the fabric of the building) together with a general staleness of the air making it impossible for unwelcome odours to dissipate as quickly as would be liked.



In designing the Heatrec 1003, Vectaire has approached the problem with the user as the main focus. It is ideally suited to the unique climatic and building requirements in the UK. The Heatrec 1003 combats the triple problems of removing moisture, odours and pollutants. It also meets the requirements for energy efficiency, and contributes immensely to the comfort of the residents.



The Heatrec 1003 works by continually extracting stale air and replacing it with fresh air. It extracts the humid, polluted air from the room where it is installed (thus ensuring condensation quickly evaporates). This air passes over the heat exchanger in the tube - and at the same time fresh air (also being continually drawn in) is heated by the stale warm air to provide a constant, draught free stream of fresh air.



In this way up to 75% of the heat is recovered providing efficient, low energy and VERY economical ventilation.

The heat recovery tube of the Heatrec 1003 is 100mm dia and is available in, 400mm, 500mm or 600mm lengths. It is ideal for new build or can replace existing 100mm or 150mm units and can be installed in four positions.

It has a termination kit which enables it to be installed completely from the inside, making it easy to install in high rise buildings.

The Heatrec 1003 runs continuously at a pre-selected choice of 2 speeds. Speed 1 (which operates at 5 litres/sec) is ideal for bathrooms.



Speed 2 operates at 8 litres/sec and is ideal for kitchen installation.



The speed can be increased to boost mode (15 litres/sec) when appropriate. This can be done by the user with the integral pull cord. Maximum speed can also be obtained by using various switches after the cord is removed.

The Heatrec 1003 is easy to maintain: the heat exchanger and filters are removable and washable.

Vectaire's innovative Single Room Heat Recovery unit has been designed using the latest wind tunnel technology.



Its two motors each have a 43,000 hour life with maintenance free and long life ball bearings.

It is double insulated - no earth required

It will operate in ambient temperatures of up to 40°C.



The termination kit incorporates both a weather louvre to stop ingress of water, and a condensate outlet to allow condensation to drain away.

The Heatrec 1003 incorporates a summer mode to help prevent over heating during the warmer months.



There is also an integral frost-stat which switches off the intake motor in colder periods.

The Heatrec 1003 complies with

- Part L1 2013 of Building Regulations for enhanced energy saving capability
- Part F 2013 of Building Regulations for reliable, efficient ventilation
- IEC 60335-2-80, BT 2006/95/CE and EMC 2004/108/CE European Directive against radio interference and electro-magnetic compatibility
- It is CE marked

Models Available:

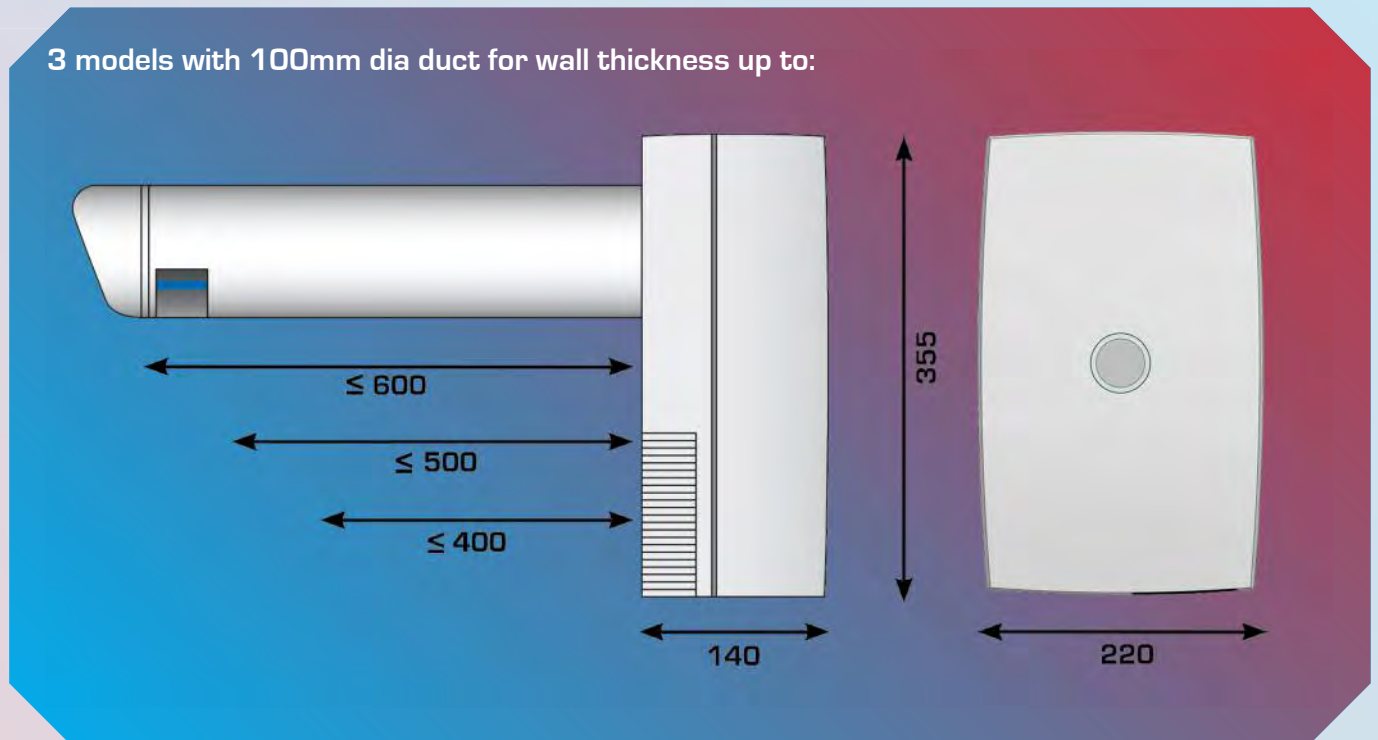
- HREC1003 - 3 speed, continuous running with pull-cord
- HREC1003T - 3 speed, continuous running with timer - overrun (from 0-30 minutes), and pull-cord
- HREC1003HT - with timer, humidistat and pull-cord.

Vectaire offers a design service to ensure that the unit installed is the best possible to provide efficient, effective, low energy and low running cost ventilation. Vectaire can also organise installation, commissioning and maintenance of these products

Single Room Heat Recovery Heatrec 1003



Dimensions (mm)



Technical Details

Model	Airflow l/sec			Power - Watts			dBA (@ 3m in free field)		
	Speed 1	Speed 2	max	Speed 1	Speed 2	max	Speed 1	Speed 2	max
HREC 1003	5	7.5	15	3.7	8.3	28.3	18.4	27.7	39.3

Other Vectaire Heat Recovery Units



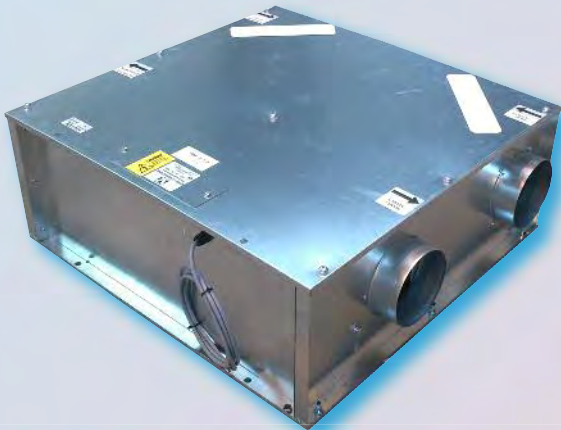
WHHR Mini DC



WHHR Midi



WHHR100/90DC-B



EVO250DC



WHHR Maxi

Vectaire Ltd
Lincoln Road
Cressex Business Park
High Wycombe
Buckinghamshire
HP12 3RH
Tel: +44(0)1494 522333
Fax: +44(0)1494 522337
Email: sales@vectaire.co.uk
Web: www.vectaire.co.uk

