

"SELV" - safety extra low voltage super silent



- **Centrifugal/High pressure duct fans**
- **3 models**
- **IP57 - SELV**
- **For toilets, shower-rooms, bathrooms and utility rooms**
- **For walls or ceilings**
- **Cord and Humidity Control**
- **SUPER SILENT 2 speed models**
- **Exceeds Building Regulations requirements (including new Document F)**

GENERAL

- high pressure duct fans
- **super silent** two speed models
- duct diameter 4"/10cm on all models
- backdraught shutters
- humidistats of dynamic type with night time set back and anti-hunting device
- humidity control models with neon to show manual operation
- filters available on MF and CB models
- can safely be installed in Zones I and II
- **all models with remote transformer**

SPECIFICATION

- casings from high quality, impact resistant, white thermo-plastic material with high mechanical strength
- double insulated motors of shaded pole type mounted on self-lubricating, sealed ball bearings for long life
- motor windings protected to Class B
- motors incorporate thermal cut-out
- maximum ambient temperature - 40°C

COMPLY WITH

- EN60335-2-80
- EC Low Voltage Directive 73/23-93/68
- EC Directive EMC89/336
- CE marked
- Key marked

TYPICAL SPECIFICATION

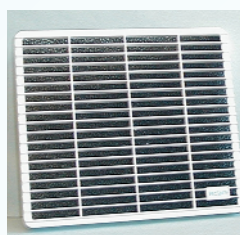
Supply and install a Vectaire MF1002CLV super silent high pressure duct fan for toilets/bathrooms supplied by Vectaire Ltd, Lincoln Road, Cressex Business Park, High Wycombe, Bucks, HP12 3RH.

This fan can either be for installation in a ceiling or wall using 4"/10cm ducting. The fan should be complete with an integral back-draught shutter and anti-vibration gasket. It should have a cord and two speeds, operating continuously at its **near silent** lower speed with the facility of being boosted to its higher level by use of a pull-cord.

The fan should be made of shockproof and heat resistant plastic, contain a motor with sealed, self-lubricating bearings, and be protected with a thermal cut-out.

The fan should be double insulated and be capable of being used with long lengths of ducting.

The fan should be SELV (IP57) rated, and comply with all current IEE, EC and Building Regulations requirements for installation into a toilet, shower-room, bathroom or utility room.



Filter

RANGE

SUPER SILENT

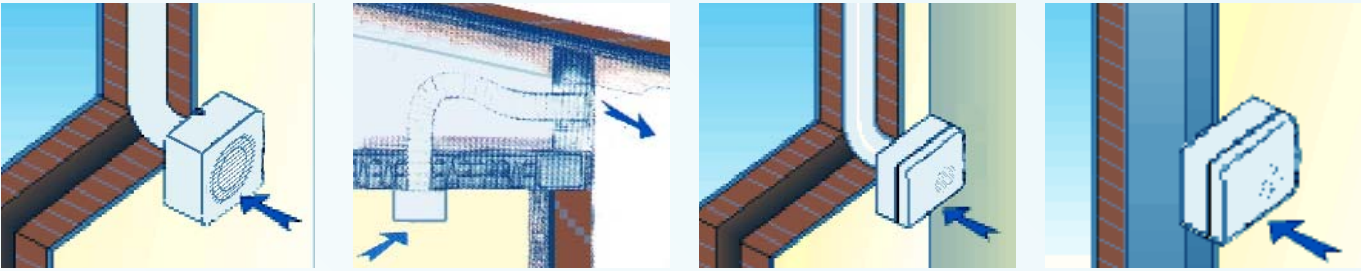
- **MF1002LV** -
2 speed, cord
- **CB952CLV** -
2 speed, cord
- **CB95H2CLV** -
humidistat, 2 speed, cord



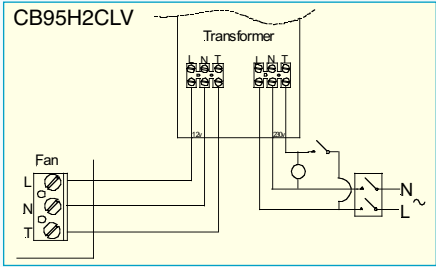
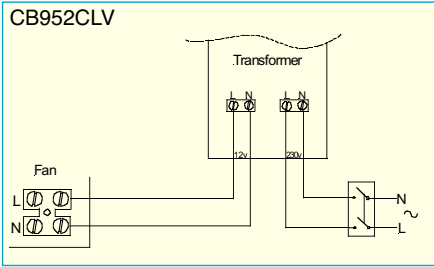
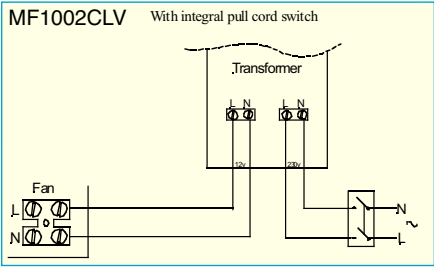


TECHNICAL CHARACTERISTICS

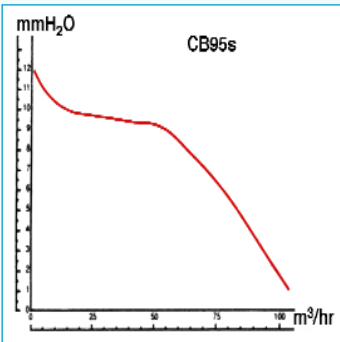
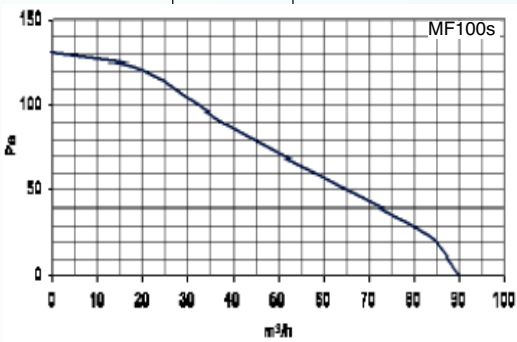
INSTALLATIONS



WIRING DIAGRAMS

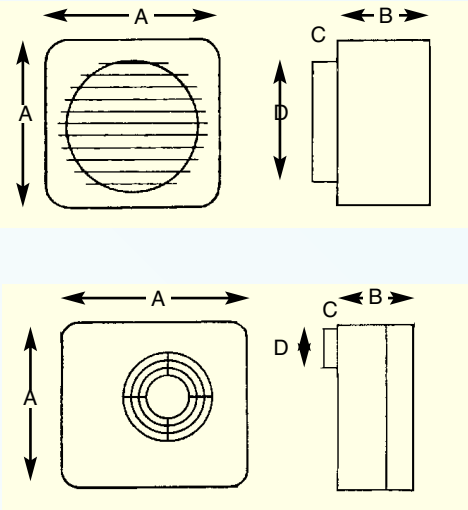


PRESSURE CURVES



	A	B	C	D
MF100 s	160	80	25	97
CB 95s	205x180	99	25	80/97

DIMENSIONS



TECHNICAL DATA

Model	max m³/hr	min m³/hr	max litres/sec	min litres/sec	Max mmH ₂ O	Max Pa	Volts	Hz	Watts	max dbA	min dbA	Hole dia mm	IP57	Weight kg
MF 100s	95	35	26	10	13	125	12	50	27	40	20	100	yes	0.8
CB 95s	110	30	30	8	15	144	12	50	27	42	19	100	yes	1.2

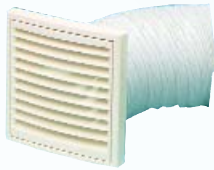
ACCESSORIES



Fixed Grille



Gravity Grille



Wall Vent Kit



Flexible Ducting

FULL RANGE OF ACCESSORIES AVAILABLE INCLUDING FLEXIBLE AND FLAT DUCTING

Tel: +44(0)1494 522333
 Fax: +44(0)1494 522337

Vectaire Ltd
 Lincoln Road, Cressex Business Park
 High Wycombe, Buckinghamshire, HP12 3RH

Email: sales@vectaire.co.uk
 Web: www.vectaire.co.uk