

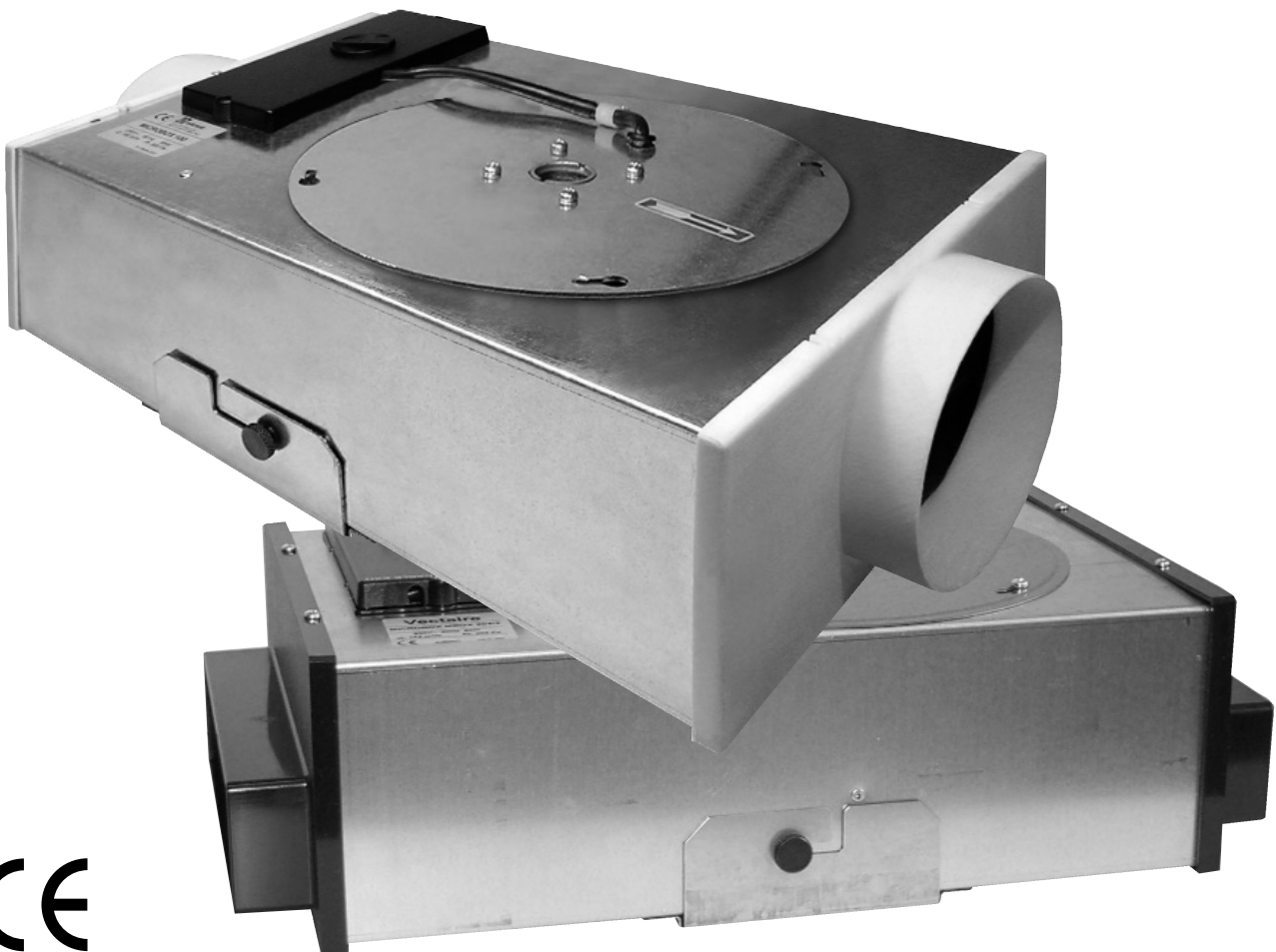
"Microbox"



Continuous Mechanical Extract Ventilation Units

Installation, Operating and Maintenance Instructions

- 5 models
- rectangular and/or round spigots
- domestic and commercial use



"MICROBOX" - CONTINUOUS MECHANICAL EXTRACT UNITS INSTALLATION AND OPERATING INSTRUCTIONS

PLEASE READ THE FOLLOWING INSTRUCTIONS VERY CAREFULLY BEFORE USING THE PRODUCT. THE MANUFACTURER WILL NOT BE HELD RESPONSIBLE AND DECLINES ANY AND ALL LIABILITY FOR DAMAGE CAUSED TO PERSONS OR PROPERTY DUE TO IMPROPER USE WITH REFERENCE TO THE PRECAUTIONS OUTLINED IN THIS MANUAL.

THIS MANUAL MUST ALWAYS BE READILY AVAILABLE.

THE RANGE

MBOX204/2:	204mm x 60mm spigot, for dwellings up to 66m ² , max capacity 191m ³ /hr
MBOX100/2:	4"/100mm spigot, for dwellings up to 66m ² , max capacity 172m ³ /hr
MBOX125/2:	5"/120mm spigot, for dwellings up to 66m ² , max capacity 208m ³ /hr
MBOX125/2Plus:	5"/120mm spigot, for dwellings up to 100m ² , max capacity 310m ³ /hr
MBOX150/2:	6"/150mm spigot, for dwellings up to 140m ² , max capacity 420m ³ /hr



ATTENTION : This symbol indicates that care must be taken in installing this product in order to avoid (potentially lethal) injury both to installer and user. This instruction MUST be followed for installation.

1. Do not use this product for any purpose other than that for which it was designed and as shown in this leaflet.
2. Remove all packaging and check that your fan has not been damaged in transit. If in doubt, contact your supplier.
3. Do not leave packaging within the reach of children or unskilled people. Dispose of hazardous waste (polystyrene, plastic, polypropylene, etc.) responsibly.
4. If the product is dropped or badly knocked, contact your supplier, dealer or manufacturer to ensure that it is operating properly.
5. Using any electrical equipment requires compliance with basic safety rules:
 - the product must not come into contact with liquid of any sort
 - the product must not be operated by children or other unskilled people.
6. The product should only be connected to the mains electricity supply or electrical outlet if:
 - your electrical voltage and frequency correspond to those shown on the rating label.
 - the capacity of your electricity supply is sufficiently powerful to operate the product at its maximum power.
 If this is not the case, contact professionally qualified personnel.
7. Before carrying out any maintenance or cleaning operation, the product must be switched off and disconnected from the main power supply..
8. If a fault, malfunction or anomaly of any type occurs, the product should be made inoperative (by turning off the switch and by disconnecting it from the mains electricity supply) and qualified personnel contacted immediately. Always request original spare parts to carry out any repairs.
9. If the product needs to be removed, turn off the main network circuit-breaker and then disconnect the appliance from that network.
10. The unit should be installed in a safe location as far away as possible from children and/or unskilled people.
11. The electricity system to which the product is connected must comply with the current standards.



WARNING : This symbol indicates that care must be taken to avoid damaging your product when following these instructions

1. This product is professionally manufactured and complies with the current standards regarding electrical equipment
2. This product conforms with the EEC directive EMC 89/336 concerning the suppression of radio interference and electromagnetic compatibility.

3. This product must not be used in an ambient temperature greater than 40 °C (104 °F).
4. Do not leave the product exposed to the weather (rain, sun, snow, etc.).
5. Possible product applications are indicated in this leaflet.
6. Do not place the unit or any part of it in water or liquids, except as indicated in the cleaning and maintenance section.
7. When cleaning or performing routine maintenance, check the condition of the appliance.
8. To avoid the risk of fire, do not use the product in the presence of inflammable substances or vapours such as alcohol, insecticides, gasoline, etc.
9. The air or fumes being extracted must be clean and free from greasy particles, soot, chemicals and corrosive agents, inflammable or explosive mixes (if these substances are treated, contact an authorised dealer for information on a specific range of explosion-proof products).
10. The device must be installed by professionally qualified personnel.
11. The product must be connected to the electricity supply by means of a double-pole switch with a minimum contact opening distance greater than 3 mm.
12. To ensure optimum operation, do not block the air intake and exit vents.
13. The room where the device is located must be adequately ventilated to ensure correct operation (UNI CIG 7129).
14. If the fan is sited in a room containing a fuel burning appliance, the installer must ensure that air replacement is adequate both for the fan and the fuel burning appliance.
15. The unit should not be used as an activator for water heaters, stoves, etc.
16. Any ducting used must be free from blockages
17. Your fan must not be exhausted into a duct which is already used for any other purpose (see Approved Document F1 2006 for guidance)
18. THIS APPLIANCE IS PROVIDED WITH THERMAL OVERLOAD PROTECTION. IF THIS IS ACTIVATED, THE FAN MUST BE DISCONNECTED FROM THE MAINS ELECTRICITY SUPPLY. THIS WILL ALLOW THE OVERLOAD DEVICE TO RE-SET. AFTER A BRIEF PERIOD, THE FAN CAN BE RE-STARTED. IF THE FAULT PERSISTS, CONSULT VECTAIRE FOR FURTHER ADVICE.

OPERATION

1. The **Microbox** is suitable for ceiling or wall installation (Fig. A)
2. If one of the spigots is not connected to ducting a safety grille **MUST** be fitted to that spigot, so that it is impossible for any moving part to be touched.
3. These fans run continuously at a preset trickle speed and have an independently switched boost speed. There is a choice of four trickle speeds, selectable during the installation by adjusting the dial on the top of the casing (Fig 9B).
4. The boost speed can be triggered by:
 - PIR (passive infra red)
 - DRH (dynamic remote humidistat)
 - AQS (remote air quality sensor)
 - THM (thermostat)
 - remote switch (which can be a light switch)
5. All the fans have an integral, over-run timer which is adjustable on installation from 0 to 25 minutes (Fig 9A). This controls the length of time that the fan will continue to operate at its boost speed once this has been triggered, and after:
 - if using a PIR, there ceases to be anyone within the scope of the PIR
 - if using a DRH, after the relative humidity has dropped to the pre-set level of the humidistat
 - if using an AQS, when the air quality has returned to an acceptable level
 - if using a THM, when the temperature has dropped to an acceptable level
 - if using a remote switch, when it is switched off.



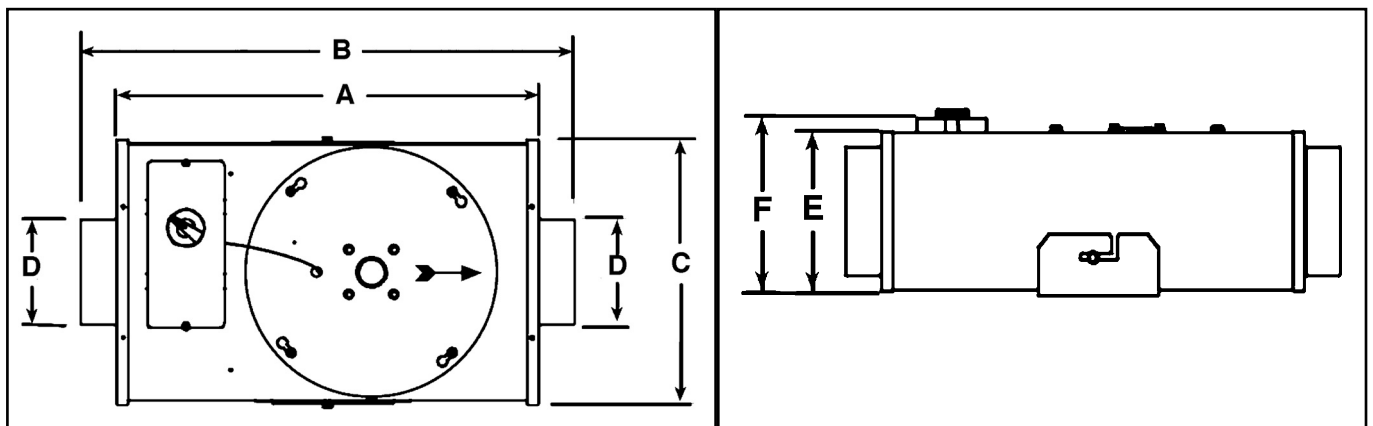
CLEANING AND MAINTENANCE

1. Before carrying out any maintenance or cleaning operations the mains electrical supply **MUST** be disconnected.
2. CLEANING AND MAINTENANCE SHOULD BE CARRIED OUT BY A QUALIFIED PERSON
3. Disconnect the terminal block (Fig. 11) before attempting to remove the motor impeller assembly.
4. Loosen the screws (Fig.12) without taking them off.
5. Rotate slightly and remove the motor-impeller assembly (Fig. 13).
6. Clean the motor-impeller assembly either with a dry brush or a dry cloth.
7. Electrical parts **cannot** be cleaned.
8. Reassembly in the reverse order to above.

TROUBLE SHOOTING

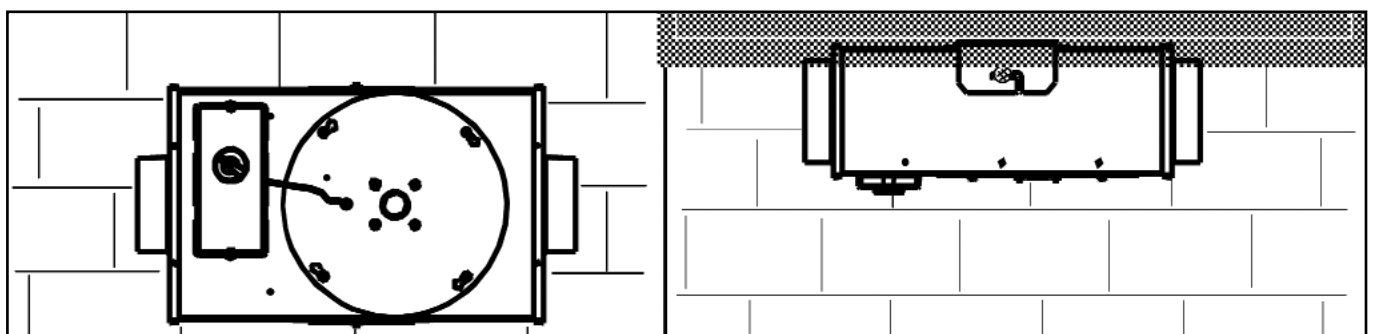
PROBLEM	POSSIBLE CAUSE	HOW TO SOLVE THE PROBLEM
The product is not working	No power	check to see that the electrical connection has been properly made and that there is an electricity supply coming to the fan.
The fan blade is not turning	Blade obstructed	check to see there is nothing blocking it

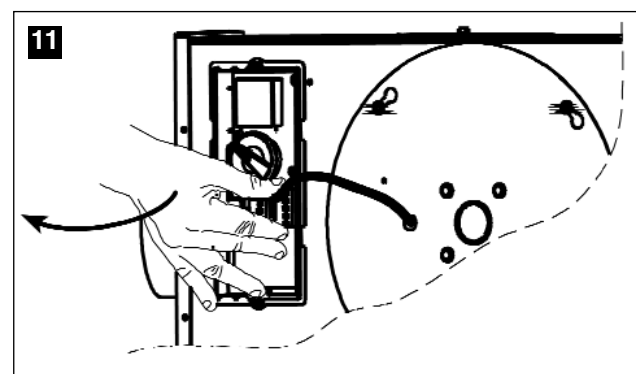
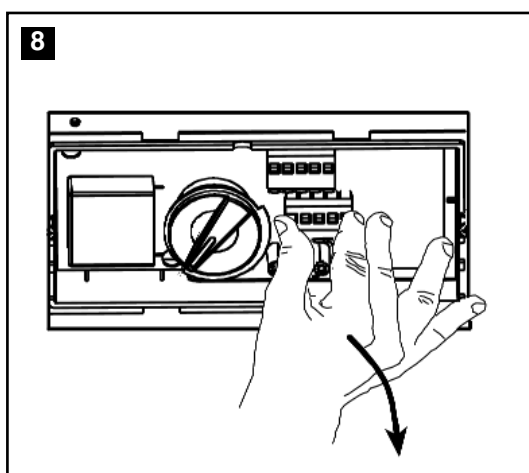
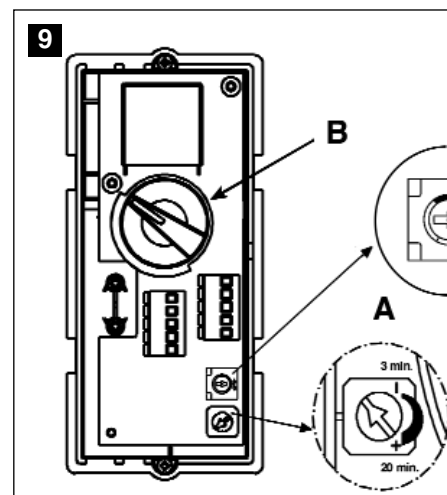
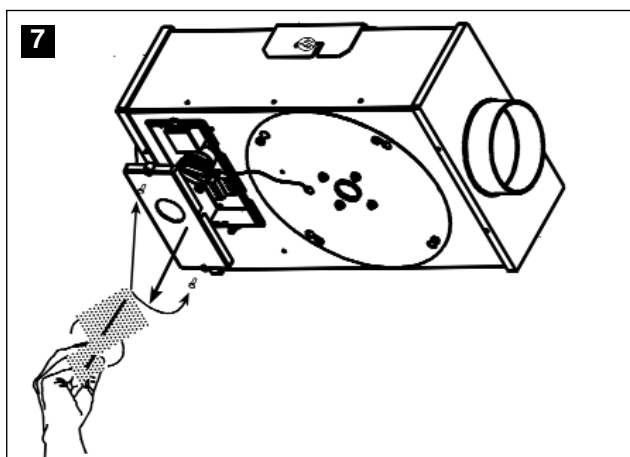
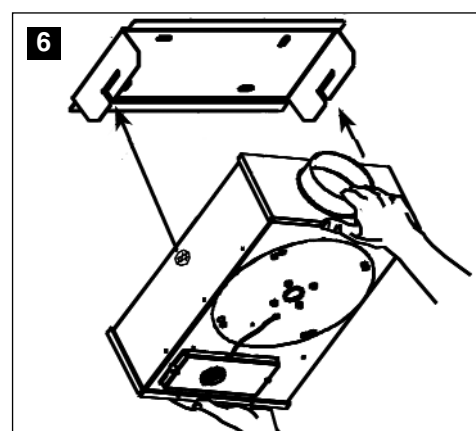
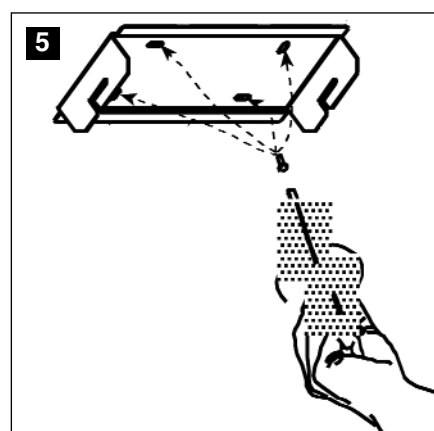
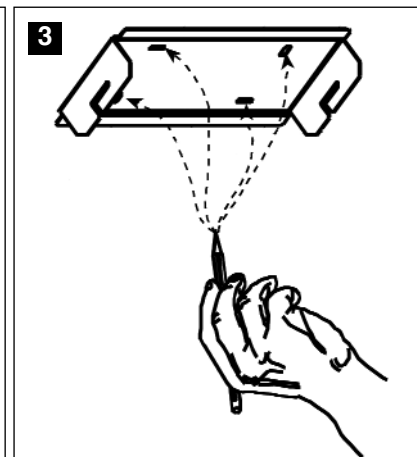
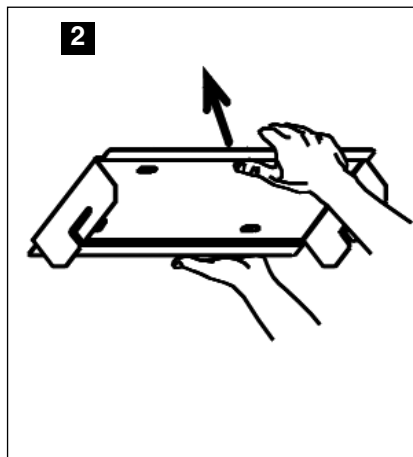
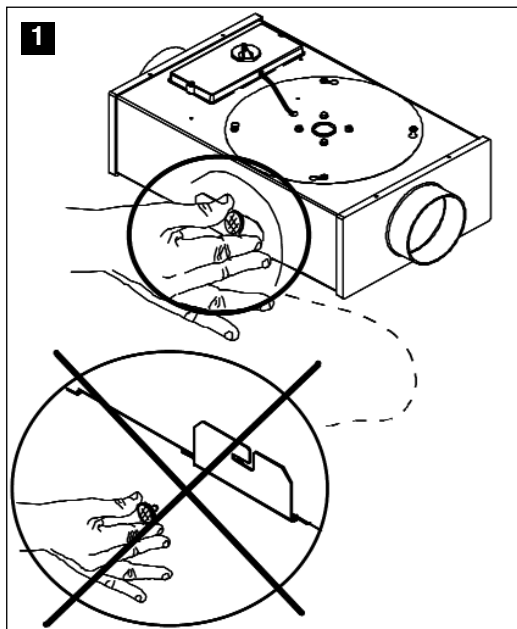
DIMENSIONS

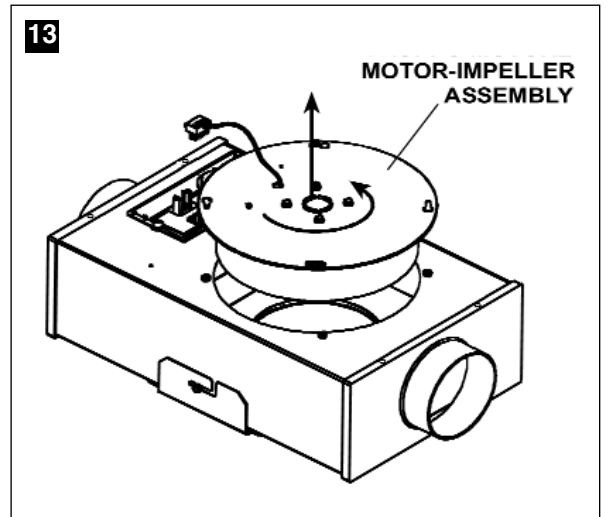
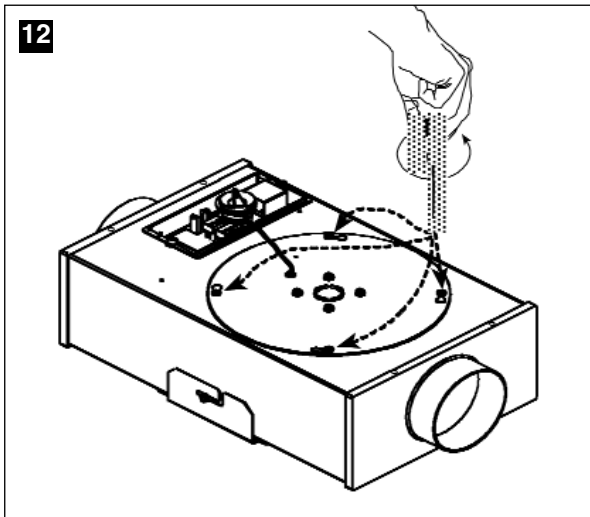


Model	A(mm)	B(mm)	C(mm)	øD(mm)	E(mm)	F(mm)	Weight Kg
MBOX 204/2	384	448	241	204x60	122	134	5.8
MBOX 100/2	384	448	241	96	122	134	5.8
MBOX 125/2	384	448	241	120	122	134	5.8
MBOX125/2Plus	436	510	307	125	167	183.5	7.0
MBOX150/2	436	510	307	150	187	201.5	7.5

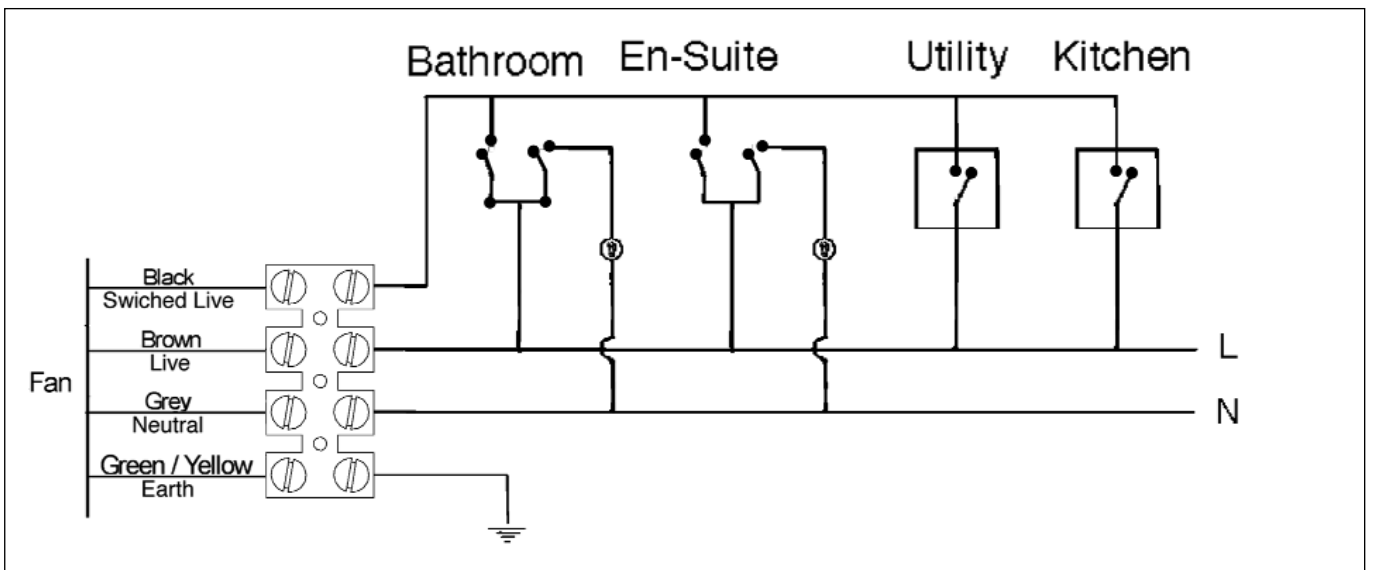
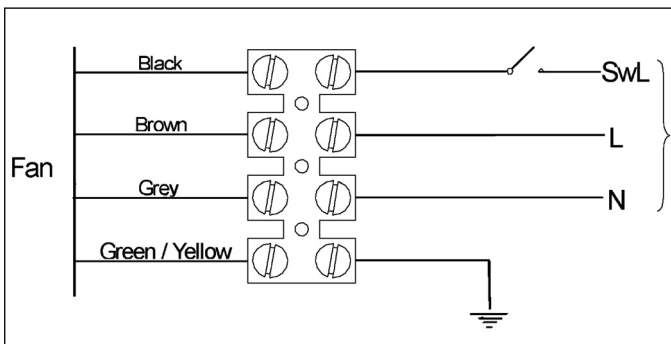
INSTALLATION







WIRING DIAGRAMS



Vectaire Ltd, Lincoln Road, Cressex Business Park, High Wycombe, Buckinghamshire, HP12 3RH
 Tel: +44 (0)1494 522333. Fax: +44 (0)1494 522337. Email: sales@vectaire.co.uk