

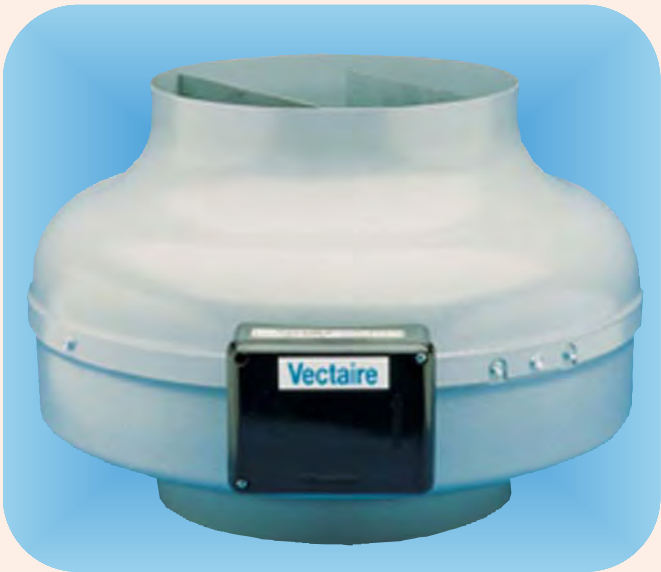
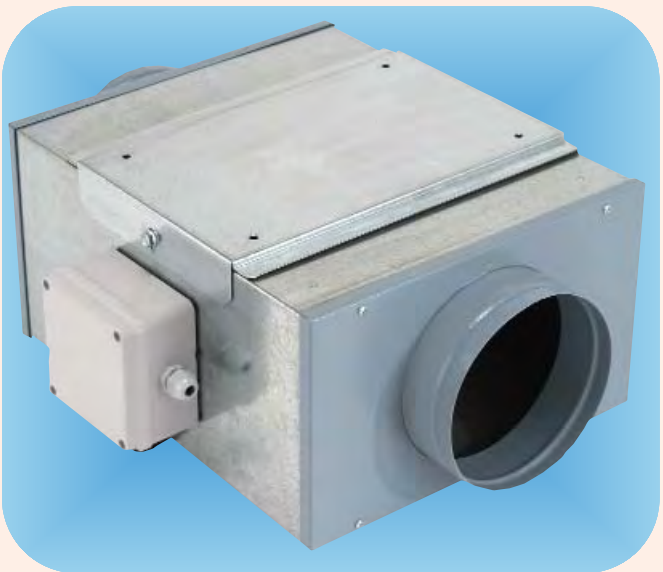
IN-LINE CENTRIFUGAL FANS

FOR INDUSTRIAL / COMMERCIAL USE



- “ACFS” - Super-Silent Acoustic Cabinet Fans
- “SBAF” - Slimbox Acoustic Fans
- “CIL” - Centrifugal In-Line Fans
- “ACFB” - Acoustic Cabinet Fans - Belt Driven

Uniclass L7534



“SBAF” SLIMBOX ACOUSTIC FANS - GENERAL

“SBAF” Range - Slimbox Acoustic Fans

- 6 models from 100mm to 315mm
- Airflow from 230 to 1800 m³/hr (0.064 to 0.5 m³/sec)
- Galvanised steel cabinet lined with acoustic insulation
- Speed controllable
- Easy to install
- External connection box can be moved to opposite side of fan if required
- Easily accessible panel for service and maintenance
- Thermal overload protection
- Motor - external rotor with IP54 protection
- External connection box - IP55 protection
- Backward curved impeller with high efficiency and low noise level
- Includes fixing bracket
- Spigots allow easy and secure duct fixing
- Can be installed against ceiling or wall
- Special "Slimbox" silencers and air filter cassettes
- 2-speed versions also available



“SBAF” SLIMBOX ACOUSTIC FANS - TECHNICAL DATA

| Model | Size | | Power kW | Current Amps | r.p.m | Speed Controller | Breakout Sound Pres dB(A) @ 3m | In-Duct Sound Power Level dB | | | | | | | |
|---------|------|-----|----------|--------------|-------|------------------|--------------------------------|------------------------------|-----|-----|-----|------|------|------|------|
| | | | | | | | | Mid Octave Bands (Hz) | | | | | | | |
| | ins | mm | | | | | | 63 | 125 | 250 | 500 | 1000 | 2000 | 4000 | 8000 |
| SBAF100 | 4 | 100 | 0.060 | 0.26 | 1990 | VC1 | 34 | 63 | 67 | 61 | 63 | 51 | 47 | 39 | 33 |
| SBAF125 | 5 | 125 | 0.070 | 0.29 | 1700 | VC1 | 40 | 63 | 66 | 60 | 64 | 52 | 48 | 40 | 33 |
| SBAF150 | 6 | 150 | 0.080 | 0.38 | 2530 | VC1 | 45 | 65 | 66 | 62 | 64 | 57 | 51 | 45 | 36 |
| SBAF200 | 8 | 200 | 0.120 | 0.54 | 2550 | VC1 | 46 | 67 | 71 | 76 | 73 | 65 | 60 | 55 | 48 |
| SBAF250 | 10 | 250 | 0.190 | 0.83 | 2550 | VC1 | 48 | 68 | 72 | 76 | 76 | 67 | 64 | 61 | 56 |
| SBAF315 | 12 | 315 | 0.310 | 1.35 | 2630 | VC4M | 49 | 73 | 77 | 73 | 74 | 68 | 67 | 66 | 62 |

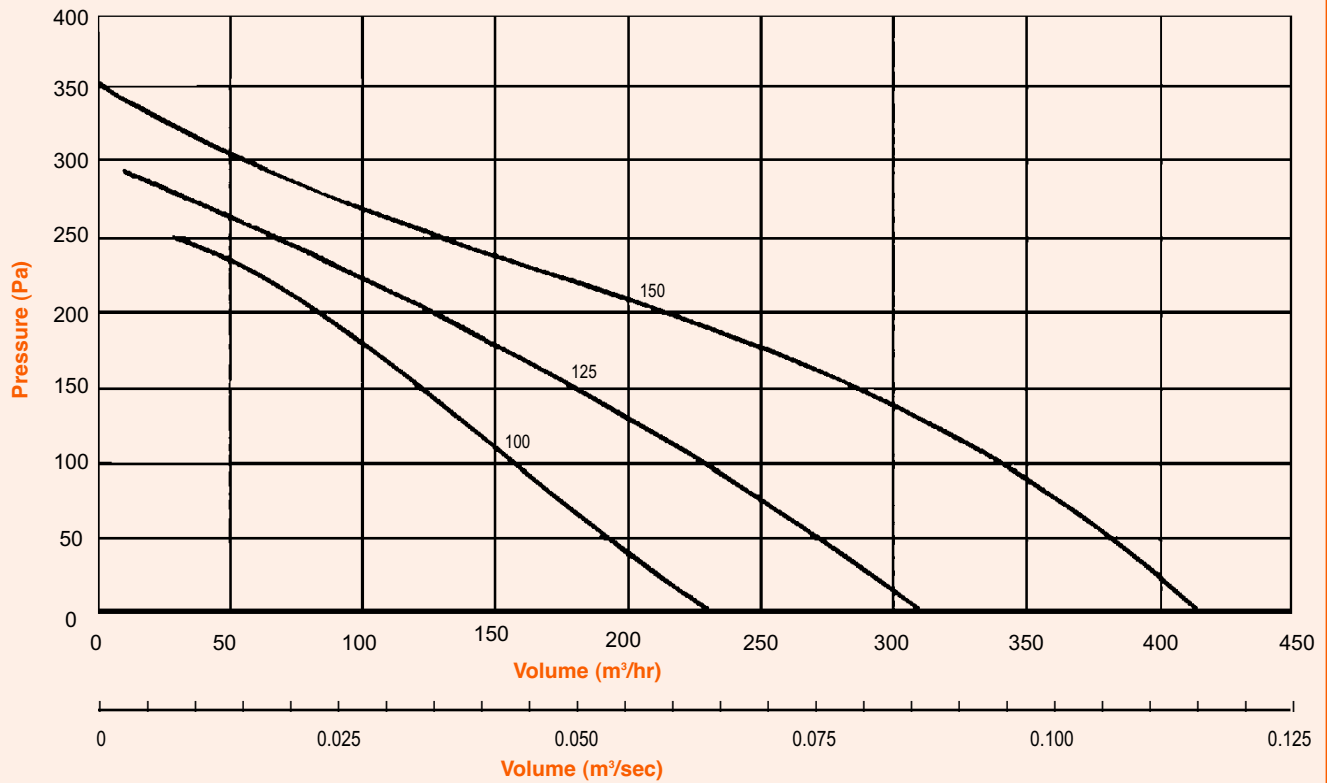
“SBAF” SLIMBOX ACOUSTIC FANS - PERFORMANCE

| Model | Max Airflow | | m ³ /sec at Pa | | | | | | | | | | | |
|---------|--------------------|--------|---------------------------|-------|-------|-------|-------|-------|-------|-------|-------|-------|-------|-------|
| | m ³ /hr | c.f.m. | 0 | 25 | 50 | 75 | 100 | 150 | 200 | 250 | 300 | 350 | 400 | 500 |
| SBAF100 | 230 | 135 | 0.064 | 0.060 | 0.054 | 0.049 | 0.043 | 0.033 | 0.024 | 0.008 | - | - | - | - |
| SBAF125 | 310 | 182 | 0.086 | 0.082 | 0.076 | 0.069 | 0.063 | 0.050 | 0.036 | 0.017 | 0.003 | - | - | - |
| SBAF150 | 420 | 247 | 0.117 | 0.111 | 0.107 | 0.100 | 0.093 | 0.079 | 0.065 | 0.036 | 0.010 | - | - | - |
| SBAF200 | 790 | 465 | 0.219 | 0.214 | 0.201 | 0.189 | 0.175 | 0.153 | 0.133 | 0.103 | 0.069 | 0.039 | - | - |
| SBAF250 | 1050 | 618 | 0.292 | 0.288 | 0.283 | 0.278 | 0.267 | 0.244 | 0.222 | 0.186 | 0.144 | 0.111 | 0.069 | 0.039 |
| SBAF315 | 1800 | 1059 | 0.500 | 0.489 | 0.478 | 0.469 | 0.447 | 0.417 | 0.386 | 0.342 | 0.306 | 0.250 | 0.167 | 0.089 |



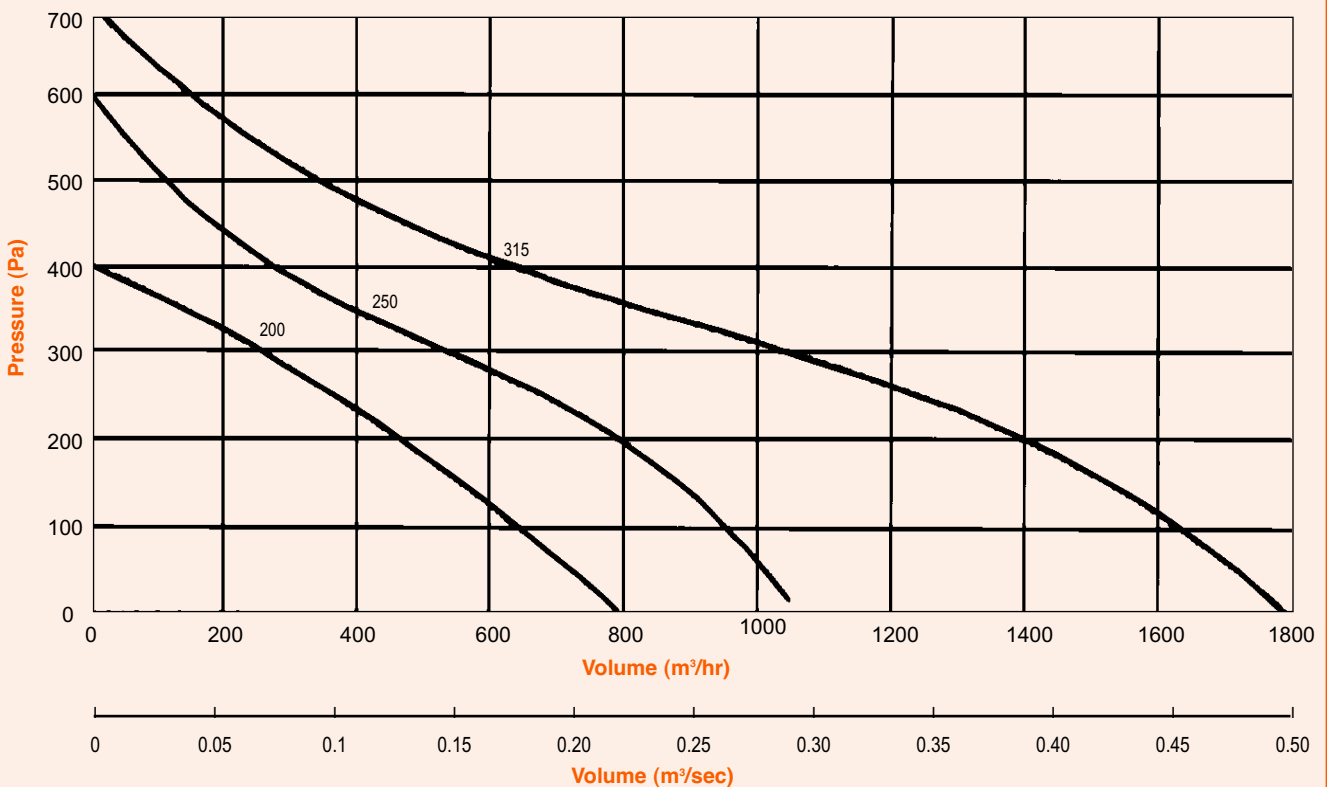
"SBAF" SLIMBOX ACOUSTIC FANS - PERFORMANCE CURVES

Models 100 - 150

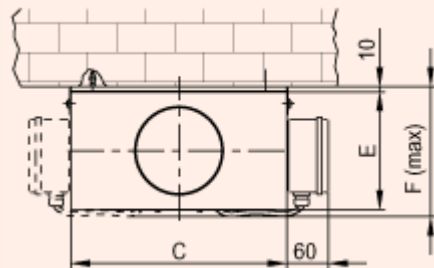
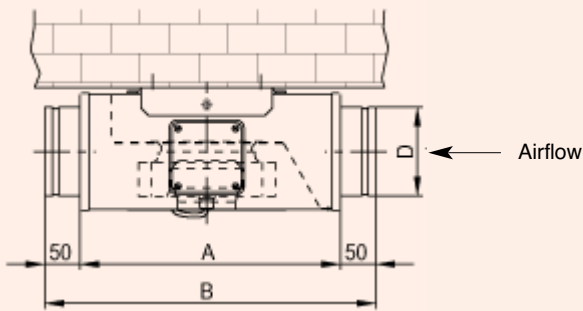


"SBAF" SLIMBOX ACOUSTIC FANS - PERFORMANCE CURVES

Models 200 - 315



“SBAF” SLIMBOX ACOUSTIC FANS - DIMENSIONS (mm)

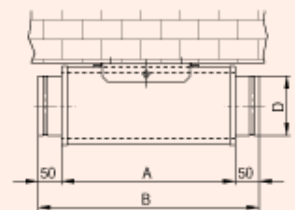
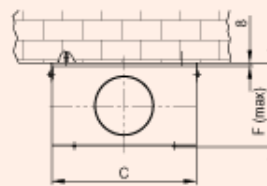
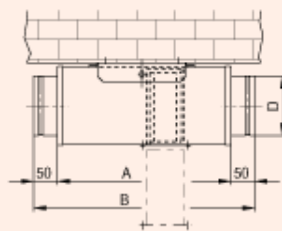


| Model | A | B | C | øD | E | F (Max) | Kg |
|---------|-----|-----|-----|-----|-----|---------|------|
| SBAF100 | 436 | 530 | 307 | 100 | 167 | 183.5 | 7 |
| SBAF125 | 436 | 510 | 307 | 125 | 167 | 183.5 | 7 |
| SBAF150 | 436 | 510 | 307 | 150 | 187 | 210.5 | 7.5 |
| SBAF200 | 503 | 603 | 373 | 198 | 233 | 260 | 11.5 |
| SBAF250 | 503 | 603 | 373 | 248 | 283 | 310 | 13 |
| SBAF315 | 503 | 603 | 423 | 312 | 343 | 370 | 16 |

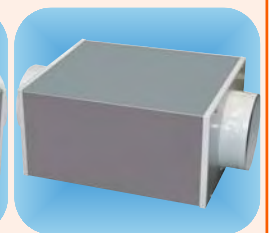
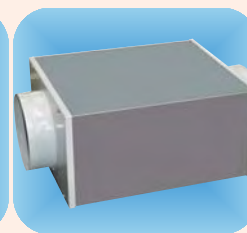
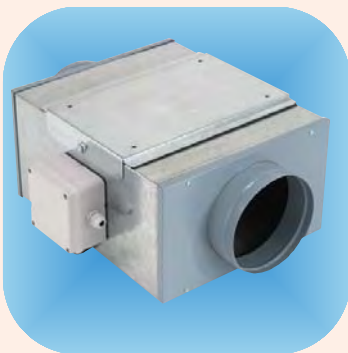
Air filter cassettes (SBFILs) and Silencers (SBSILs) are available for use **ONLY** with the “SBAF” fans. The sizes are identical to the fans themselves.

Filter

Silencer

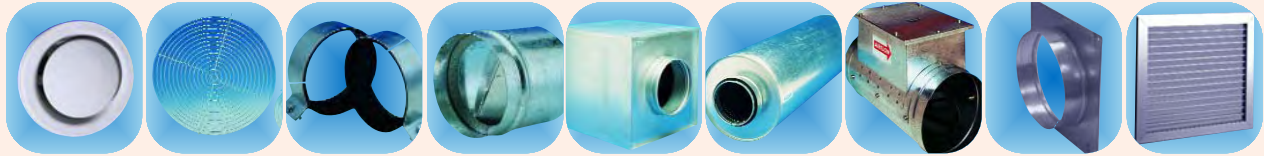


“SBAF” SLIMBOX ACOUSTIC FANS - ACCESSORIES



| Fan Model | Size | | Speed Controller | Filter Cassette | Silencer |
|-----------|------|----|------------------|-----------------|----------|
| | in | cm | | | |
| SBAF100 | 4 | 10 | VC1 | SBFIL100 | SBSIL100 |
| SBAF125 | 5 | 12 | VC1 | SBFIL125 | SBSIL125 |
| SBAF150 | 6 | 15 | VC1 | SBFIL150 | SBSIL150 |
| SBAF200 | 8 | 20 | VC1 | SBFIL200 | SBSIL200 |
| SBAF250 | 10 | 25 | VC1 | SBFIL250 | SBSIL250 |
| SBAF315 | 12 | 31 | VC4M | SBFIL315 | SBSIL315 |

ACCESSORIES



| Size | | Air Valve (1) | Protection Guard | Duct Clamp | Backdraught Shutter | Filter Cassette | Silencer | Duct Heater | Spigot Plate | Door Transfer Grille |
|------|----|---------------|------------------|------------|---------------------|-----------------|----------|-------------|--------------|----------------------|
| in | cm | | | | | | | | | |
| 4 | 10 | VAV4 | CILG100 | CILDC100 | GS100 | AFC100 | SIL100 | DH100-0.8kw | SPL100 | - |
| 5 | 12 | VAV5 | CILG125 | CILDC125 | GS125 | AFC125 | SIL125 | DH125-1.2kw | SPL120 | - |
| 6 | 15 | VAV6 | CILG150 | CILDC150 | GS150 | AFC150 | SIL150 | DH150-1.2kw | SPL150 | NVGD6 |
| 8 | 20 | VAV8 | CILG200 | CILDC200 | GS200 | AFC200 | SIL200 | DH200-2.5kw | SPL200 | NVDG8 |
| 10 | 25 | - | CILG250 | CILDC250 | GS250 | AFC250 | SIL250 | DH250-3.0kw | SPL250 | NVDG10 |
| 12 | 31 | - | CILG315 | CILDC315 | GS315 | AFC315 | SIL315 | DH315-4.5kw | SPL300 | NVGD12 |
| 14 | 35 | - | CILG355 | CILDC355 | GS355 | AFC350 | SIL350 | DH350-6.0kw | SPL350 | NVGD14 |
| 16 | 40 | - | - | - | - | AFC400 | SIL400 | DH400-11kw | SPL400 | NVGD16 |
| 18 | 10 | - | - | - | - | AFC450 | SIL450 | DH450-12kw | SPL450 | NVGD18 |
| 20 | 20 | - | - | - | - | AFC500 | SIL500 | DH500-15kw | SPL500 | NVGD20 |



| Size | | Flexible Ducting(2) | Worm Drive Clips | Duct Joining Piece | T Section | Y Piece | Flexible Duct Connector(3) | Egg Crate Grille | | Single Deflection Grille | |
|------|----|---------------------|------------------|--------------------|-----------|---------|----------------------------|------------------|--------|--------------------------|--------|
| in | cm | | | | | | | Standard | Damper | Standard | Damper |
| 4 | 10 | VFD4/6 | WDC4 | DJP4 | TP4 | YP4 | - | - | - | - | - |
| 5 | 12 | VFD5/6 | WDC5 | DJP5 | TP5 | YP5 | FLC125 | - | - | - | - |
| 6 | 15 | VFD6/6 | WDC6 | DJP6 | TP6 | YP6 | FLC150 | ECG6 | ECGD6 | SD6 | SDD6 |
| 8 | 20 | VFD8/6 | WDC8 | DJP8 | TP8 | YP8 | FLC200 | ECG8 | ECGD8 | SD8 | SDD8 |
| 10 | 25 | VFD10/6 | WDC10 | DJP10 | TP10 | - | FLC250 | ECG10 | ECGD10 | SD10 | SDD10 |
| 12 | 31 | VFD315/6 | WDC12/16 | DJP12 | TP12 | - | FLC310 | ECG12 | ECGD12 | SD12 | SDD12 |
| 14 | 35 | VFD14/6 | WDC12/16 | DJP14 | - | - | FLC350 | ECG14 | ECGD14 | SD14 | SDD14 |
| 16 | 40 | VFD16/6 | WDC12/16 | DJP16 | - | - | FLC400 | ECG16 | ECGD16 | SD16 | SDD16 |
| 18 | 45 | VFD18/6 | WDC18/22 | DJP18 | - | - | FLC450 | ECG18 | ECGD18 | SD18 | SDD18 |
| 20 | 50 | VFD20/6 | WDC18/22 | DJP20 | - | - | FLC500 | ECG20 | ECGD20 | SD20 | SDD20 |



| Size | | Multi Spigot Box(4) | Grille Box(5) | | Gravity Shutter(6) | External Louvre(7) | Wall Cowl | Roof Terminal | | Anti Vibration Mounts | |
|------|----|---------------------|---------------|----------|--------------------|--------------------|-----------|---------------|----------|-----------------------|--------|
| in | cm | | Top | Side | | | | Standard | Shutters | Standard | Spring |
| 4 | 10 | MSB4/- | - | - | GG4 | FG4 | VWC | - | - | AVM1 | AVMS |
| 5 | 12 | MSB5/- | - | - | GG5 | FG5 | VWC | - | - | AVM1 | AVMS |
| 6 | 15 | MSB6/- | GB6/4 | GBS6/4 | GG6 | FG6 | VWC | - | - | AVM1 | AVMS |
| 8 | 20 | MSB8/- | GB8/6 | GBS8/6 | GG20 | FGS8 | - | RT200 | RTS200 | AVM1 | AVMS |
| 10 | 25 | MSB10/- | GB10/6 | GBS10/6 | GG25 | FGS10 | - | RT200 | RTS200 | AVM1 | AVMS |
| 12 | 31 | MSB12/- | GB12/8 | GBS12/8 | GG31 | FGS12 | - | RT300 | RTS300 | AVM1 | AVMS |
| 14 | 35 | MSB14/- | GB14/10 | GBS14/10 | GG35 | FGS14 | - | RT350 | RTS350 | AVM1 | AVMS |
| 16 | 40 | MSB16/- | GB16/12 | GBS16/12 | GG40 | FGS16 | - | RT400 | RTS400 | AVM1 | AVMS |
| 18 | 45 | MSB18/- | GB18/- | GBS18/- | GG45 | FGS18 | - | RT400 | RTS400 | AVM1 | AVMS |
| 20 | 50 | MSB20/- | GB20/- | GBS20/- | GG50 | FGS20 | - | RT500 | RTS500 | AVM1 | AVMS |

- (1) VAV4 and VAV5 also available in chrome, steel and with integral fire damper. VAV6 also available in chrome and steel.
 (2) Vectaire Flexible Ducting available in different lengths. Insulated aluminium and acoustic aluminium flexible ducting also available.
 (3) For use with circular, rigid ducting
 (4) Code represents size of main and side branches, e.g MSB12/10 is 12" main and 10" side branches.
 (5) First number represents Grille Box size, second number duct diameter (both sizes in inches) - other size/diameter combinations available
 (6) 10, 12 and 15cm Gravity Shutters plastic - other sizes with metal frame and plastic louvres.
 (7) 10, 12 and 15cm External Louvres plastic - all other sizes aluminium with birdscreen
 N.B - all grilles and grille boxes available in larger sizes.

Vectaire Ltd
 Lincoln Road
 Cressex Business Park
 High Wycombe
 Buckinghamshire
 HP12 3RH
 Tel: +44 (0)1494 522333
 Fax: +44 (0)1494 522337
 Email: sales@vectaire.co.uk
 www.vectaire.co.uk

