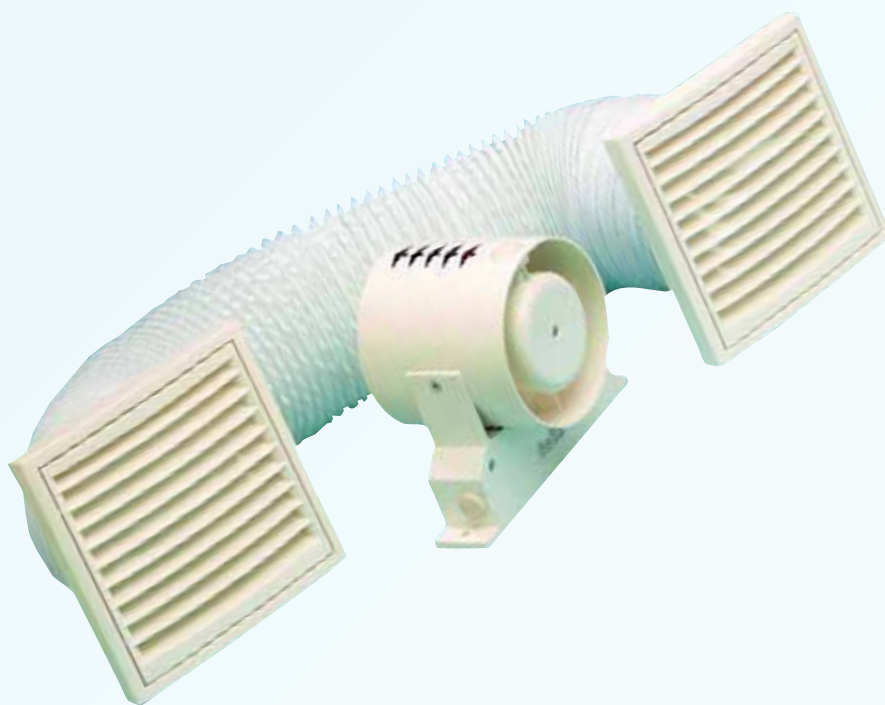




"SFK" - shower fan kits



- Axial fan kits
- 6 models
- 3 sizes for toilets, shower-rooms, bathrooms, utility rooms and kitchens
- For ceiling installation
- Standard and Timer
- With ducting and wall grilles
- Exceeds Building Regulations requirements (including new Document F)

GENERAL

- axial fan kit designed to extract over the length of ducting supplied
- timer adjustable from 3-15 minutes
- kit contains:
 - in-line duct fan
 - mounting bracket (4"/10cm) version only)
 - inside and outside grilles
 - 3m length of PVC flexible ducting (4"/10cm, 5"/12cm or 6"/15cm dia)
 - screws, plugs and cable ties

SPECIFICATION

- made of shock proof and heat resistant plastics
- motors have sealed, self lubricating bearings for long life
- protected with thermal cut-out
- double insulated

COMPLY WITH

- EN60335-2-80
- EC Low Voltage Directive 73/23-93/68
- EC Directive EMC89/336
- CE marked

RANGE

- SFK10/4, 12/5, 15/6 - standard
- SFK10/4T, 12/5T, 15/6T - overrun timer



Tel: +44(0)1494 522333
Fax: +44(0)1494 522337

Vectaire Ltd
Lincoln Road, Cressex Business Park
High Wycombe, Buckinghamshire, HP12 3RH

Email: sales@vectaire.co.uk
Web: www.vectaire.co.uk

TYPICAL SPECIFICATION

Supply and install a Vectaire SFK10/4T shower fan kit for toilets/bathroom/shower-rooms supplied by Vectaire Ltd, Lincoln Road, Cressex Business Park, High Wycombe, Bucks, HP12 3RH.

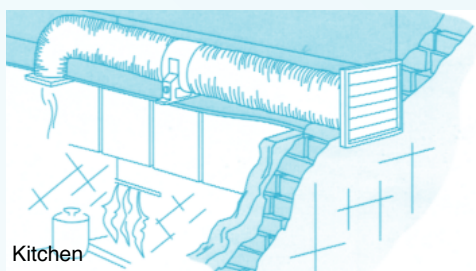
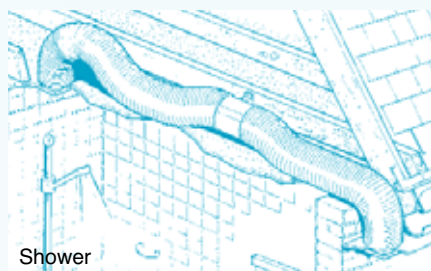
The kit should be complete with a 3m length of PVC ducting and grille for the inside and outside wall. The fan should have an over-run timer, which is adjustable from between 3 and 15 minutes, and be capable of being wired so that the fan starts to operate when the light in the room in which it is installed comes on.

The fan should be made of shockproof and heat resistant plastic, contain a motor with sealed, self-lubricating bearings, and be protected with a thermal cut-out.

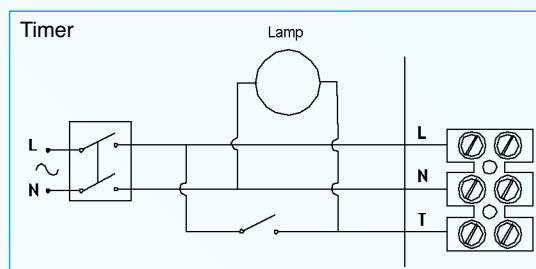
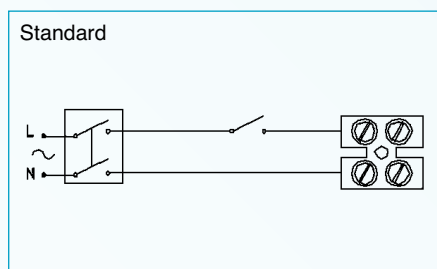
The fan should be double insulated, and comply with all current IEE, EC and Building Regulations requirements for installation into a toilet, shower-room, bathroom or utility room.

TECHNICAL CHARACTERISTICS

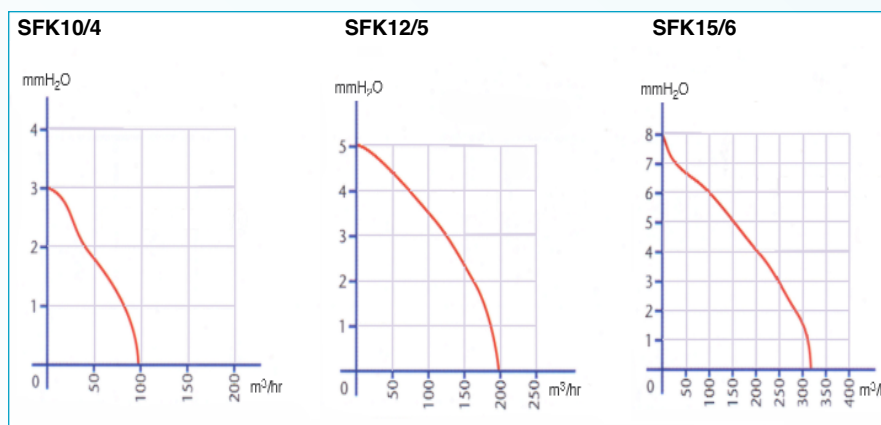
INSTALLATION



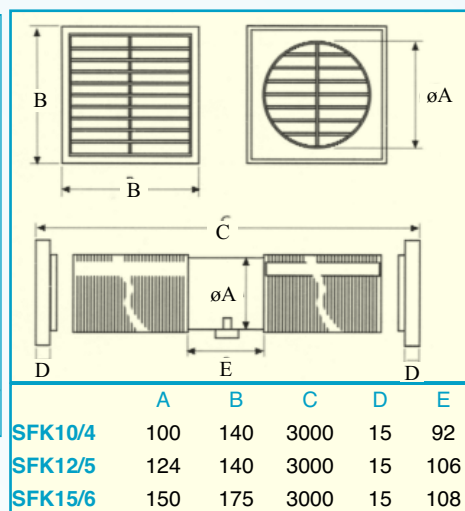
WIRING DIAGRAMS



PRESSURE CURVE



DIMENSIONS



TECHNICAL DATA

Model	m³/hr	litres/sec	Max mmH ₂ O	Max Pa	Volts	Hz	Watts	dba	Hole dia mm	Weight kg
SFK10/4	98	27	3	29	230	50	15	41	100	1.10
SFK12/5	190	53	5	49	230	50	20	43	100	1.83
SFK15/6	320	89	8	98	230	50	25	43	100	2.10

ACCESSORIES

FULL RANGE OF ACCESSORIES AVAILABLE INCLUDING FLEXIBLE AND FLAT DUCTING