

WHHR100/90DC-B Plus

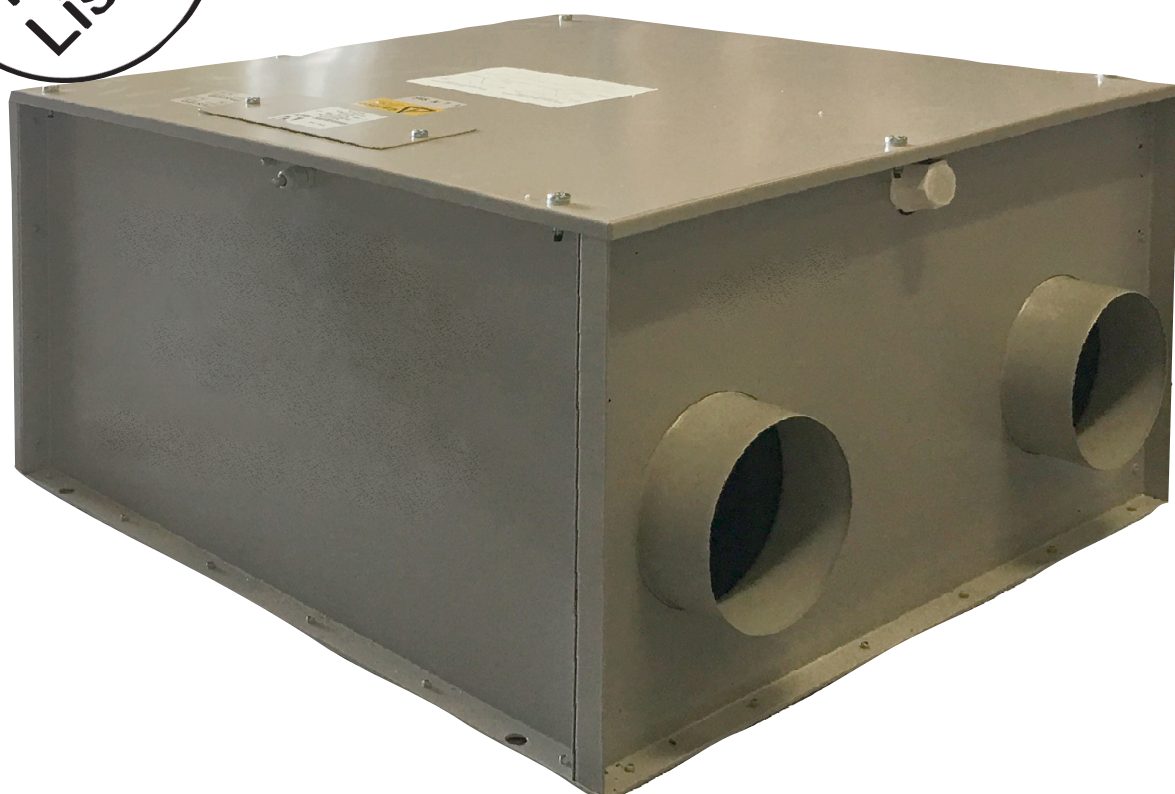
Bypass Models



Whole House Heat Recovery Unit with Low Energy
DC Motor and LCD control

For domestic and commercial use

Installation, Operating and Maintenance Instructions





"WHHR100/90DC-B PLUS" - WHOLE HOUSE HEAT RECOVERY UNIT INSTALLATION AND OPERATING INSTRUCTIONS

Safety Notice

It is important to read this Instruction Manual carefully before installing or using the product. Following these instructions will ensure that your ventilation system is installed, commissioned and used properly and continues to operate effectively. Vectaire will not be held responsible and will not accept liability for any damage caused to persons or property through failure to follow the guidance provided in this manual. It should always be available with the product for easy reference.

Your unit **SHOULD NOT** be switched off. It is designed to run continuously. If it is switched off indoor pollutant and moisture levels may increase.

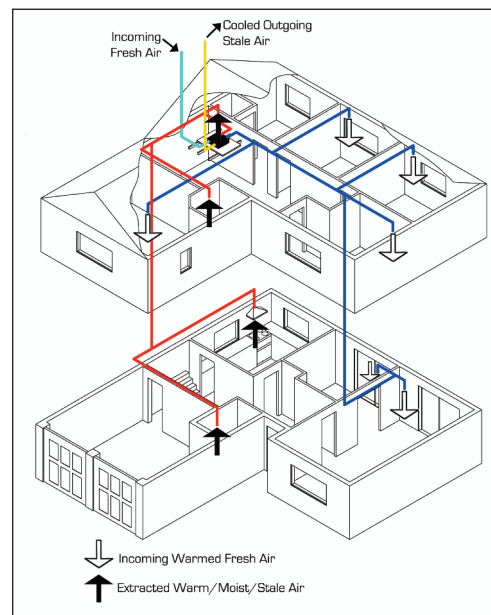
WHHR100/90DC-B Plus: 5"/125mm spigot, max capacity 83 l/sec

General Information

The Vectaire WHHR100/90DC-B Plus heat recovery system provides whole house mechanical ventilation to living areas, bedrooms, kitchen and bathrooms. It extracts stale, contaminated air from kitchens, utility rooms and bathrooms, and uses the heat recovered from this air to warm fresh, incoming air to create a flow of fresh air throughout the dwelling. The extract and intake air streams are separated to avoid contamination.

Heat is reclaimed from extracted air and used, via the heat exchange process, to warm incoming fresh air. The system will operate continuously to create a stable, comfortable, healthy environment avoiding the use of excessive energy and saving heat already generated.

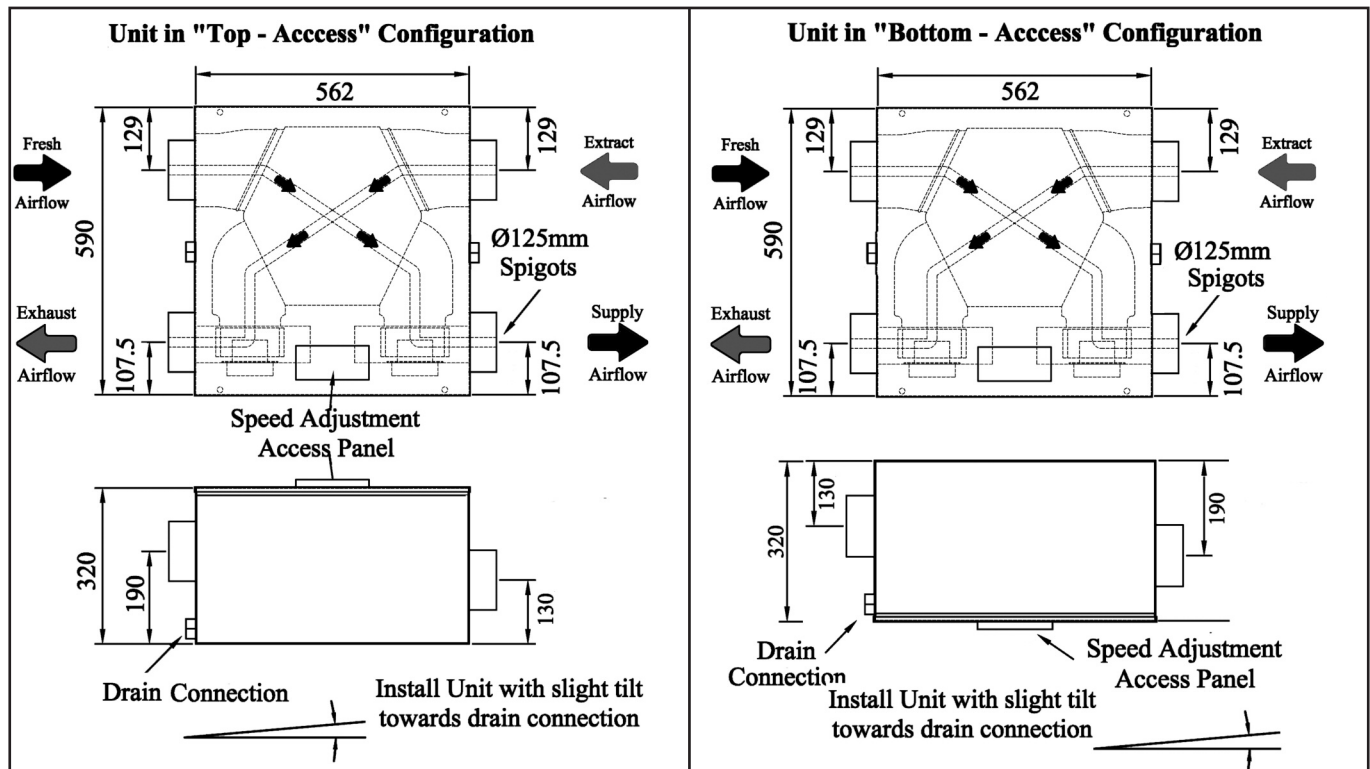
The heat recovery unit will generally be installed in the loft of a house or the void above the ceiling in an apartment (but may be installed in a cupboard) and will be connected by hidden ductwork to vents sited in the ceilings of the rooms which require ventilation. Each unit is commissioned individually allowing its performance to be tailored to suit the performance required. There will be a facility to boost the extraction rate when desired (e.g. when cooking or bathing or pollutant levels rise). This may be done automatically or manually.



The system is designed to run continuously and should **NOT** be switched off except for maintenance or filter replacement. It is important to follow the advice in this user manual and correctly install and maintain the system to ensure a healthy and comfortable indoor environment.

Features

- **Sap PCDB Listed** whole house heat recovery units giving continuous ventilation in the kitchen and up to four additional wet rooms
- low noise levels
- variable choice low (trickle) speed and boost options for optimum setting at installation
- boost speed can be triggered by a switched live connection from a variety of external devices including:
 - PIRFF (passive infra red)*
 - DRH240 (dynamic remote humidistat)*
 - THM (thermostat)*
 - a light switch (if more than one light switch is used, **each one must be a double pole switch**)
 - a remote switch/pull cord
 or via LCD control panel
- Economical EC motor with electronic control plus:
 - Standard control features**
 - > **Independent motor speed control**
 - Each motor can be adjusted independently
 - Trickle, boost and purge speeds can be set at installation
 - > **Adjustable over-run timer** - from 0-90 Minutes, factory set to 0 minutes
 - > **Adjustable delay-on timer** - from 0-5 Minutes, factory set to 2 minutes
 - > **Integral frost stat** - proportionally reduces intake motor speed as temperature falls
 - > **BMS connections** - for remote motor shut off
- Installation **MUST** be carried out by suitably qualified personnel and **MUST** be in accordance with current IEE regulations



IT IS IMPORTANT THESE THESE INSTRUCTIONS ARE READ FULLY BEFORE INSTALLATION

- This product should not be used for any purpose other than that for which it was designed and as shown in this leaflet.
- All packaging should be removed and the unit checked for damage in transit. If there is any damage, please contact your supplier.
- The WHHR100/90DC-B-Plus Bypass model will generally be fitted into a loft or ceiling void. **In order to comply with Construction (Design & Management) Regulations, sufficient access for safe maintenance (recommended on an annual basis), or removal following installation, MUST be provided for this product. See dimensions above.**
- Fire Dampers **must be fitted** to duct work at appropriate locations in accordance with Building Regulations
- **Flue gases from fuel-burning equipment must not be drawn into a living area. If any room from which air is extracted contains a fuel burning appliance, such as a central heating boiler, then its flue must be of the sealed or balanced flue type, or allowance must be made for an adequate supply of air into the room.**
- The unit must NOT be installed:
 - where there is excessive oil or grease
 - where there are hazardous gases, liquids or vapours that are flammable or corrosive
 - in ambient temperatures above 50°C or lower than 5°C (-28°C using pre-heater)
 - in humidity levels above 90% or in a wet environment
- Where possible the unit should NOT be installed directly above a bedroom or living room.
- The condensation drain **must** be fitted and if insulated, use the equivalent of at least 25mm of insulating material with a thermal conductivity of 0.04 W/(mK)
- Care should be taken to ensure that ducting is free from blockages before switching on the unit as this may invalidate your guarantee
- External grilles should be located a minimum of 600mm from any flue outlet in accordance with all Regulations
- The unit must be connected to a 230v-240v, 50Hz single phase electrical supply.
- A triple pole isolation switch with contact separation of at least 3mm must be used to connect the appliance to the fixed wiring when using the Switched Live.
- The product should only be connected to the mains electricity supply or electrical outlet if:
 - your electrical voltage and frequency correspond to those shown on the rating label.
 - the capacity of your electricity supply is sufficiently powerful to operate the product at its maximum power.
- If one of the spigots is not connected to ducting a safety grille **MUST** be fitted to that spigot, so that it is impossible for any moving part to be touched.

Installation of the appliance **MUST** be carried out by a qualified and suitably competent person and should be carried out in clean, dry conditions where dust and humidity are at minimal levels. The unit is not suitable for installation to the exterior of the dwelling.



Duct and Duct Connections [refer to design drawing]

- 4 x 125mm nominal diameter spigots are provided for the connection of ducting. These are clearly marked for correct connection of the supply and exhaust ducts.
- Where ducting is installed in an unheated space, all of the ducts should be insulated. Where ducting is installed in a heated space, only the cold ducts should be insulated. i.e. the supply duct from outside and the extract duct from the unit to the outside.
- The duct layout must be designed to suit the requirements of the ventilation/recovery system and building lay-out. If the ducting passes through a fire wall/barrier, suitable fire dampers must be installed
- Where rigid duct is used, it should be installed using the least number of fittings to minimise air flow resistance. Where possible, final connection to the grilles and unit should be made with a flexible connection.
- Where flexible ducts are used, ensure that:
 - duct runs are kept as short as possible
 - the duct is stretched so that it is smooth and straight
 - where bends are necessary, they have large radii (ie avoid sharp bends)
 - the duct is not crushed if in a restricted area

Condensation

[The unit may sometimes produce condensation which must be drained away. A 15mm dia pipe outlet is provided on this unit].

- A 15mm dia pipe must be fitted to the pipe connection. If any part of the condensate drain is in an unheated space it **MUST** be insulated with the equivalent of at least 25mm of insulating material with a thermal conductivity of 0.04 W/(mK).
- The pipe must drain into the normal household drainage system.
- The drain must incorporate a wet or dry trap to prevent air penetration.
- The unit must be tilted towards the side carrying the condensation exit point. It should be installed horizontally with a 3° tilt towards the condensation drain used (equivalent of raising the opposite end by approximately 25mm).
- The drainage pipe must have a continuous fall from the unit to the drainage collection point.

Electrical Connection

WARNING: these appliances must be earthed and all wiring must conform to current IEE Regulations and all applicable standards and Building Regulations.

- The unit is suitable for 230V, 50Hz Single phase supply.
- The unit is supplied with a mains rated 4 core flexible cord (black, brown, grey and green/yellow)
- A triple pole isolation switch with contact separation of at least 3mm must be used to connect the appliance to the fixed wiring when using the Switched Live.
- Boost controls must not be located within 1 metre of a cooker or where they may be affected by excessive heat or moisture
- Boost controls should be clearly identified and conveniently located.
- The boost speed can be activated by a switched live connection (in addition to the permanent supply live). The switched live can be operated by a variety of external devices, including:-
 - PIRFF (passive infra red)*
 - DRH240 (dynamic remote humidistat)*
 - THM (thermostat)*
 - a light switch (if more than one light switch is used, **each one must be a double pole switch**)
 - a remote switch/pull cord
 or via LCD control panel

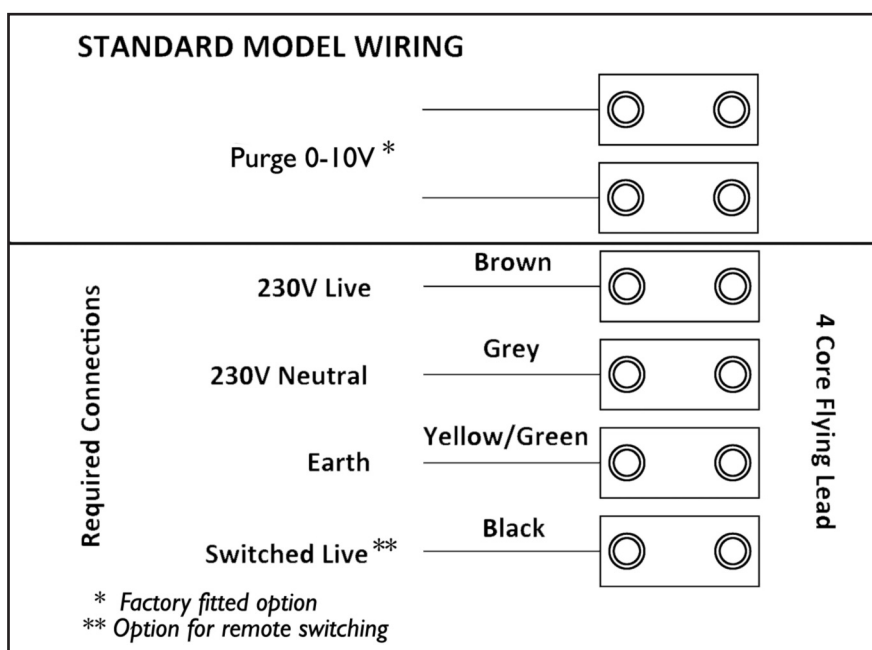
[*PIRFF, DRH240 and THM may have integral over-run timer which controls the length of time that the fan will continue to operate at its boost speed after the boost has been switched off.]



Commissioning

- When the unit is set up and running, the minimum setting on the speed control switch must relate to the designed volume air flow. The variable air flow from minimum to maximum allows the unit to extract a greater volume to cope with any increase in the build up of condensation or foul air, ie cooking etc.
- Before starting the commissioning procedure, refer to the design drawing for correct air flows.
- Installation of the appliance **MUST** be carried out by a qualified and suitably competent person and should be carried out in clean, dry conditions where dust and humidity are at minimal levels. It should only be installed after other building works have been completed and the building in which it is installed cleaned. Failure to comply with any of the above points will have an impact on the validity of the guarantee.
- Prior to starting the commissioning procedure, ensure that the ductwork connections and airflow directions are as marked on the product.
- Before making any adjustments, ensure that the air valves or grilles are fully open.
- **Please see separate "LCD Control Panel Installer Instructions" for details on commissioning and user operations.**

WARNING : With the control board panel removed, 230 volt live connections are accessible.



Cleaning and Maintenance

WARNING: The unit uses a 230V supply and contains rotating mechanical parts.

- Before carrying out any maintenance or cleaning operations the mains electrical supply **MUST** be disconnected.
- Heat Exchanger maintenance must be done professionally. Contact Vectaire Service Department for Advice.
- The air filters of the Vectaire WHHR100/90DC-B Plus should be cleaned regularly by a suitably qualified person (the frequency of cleaning will vary depending on the installation environment).

To clean the filters

- Remove the main access panel
- Remove the rubber inserts from the filter slots (where fitted) and slide out the filters from the internal mouldings.
- Clean the filters carefully using a vacuum cleaner and refit.
- Replace the rubber inserts into the slots.
- Replace the access panel and ensure it is securely located.
- Power to the unit can now be restored.

Filter Replacement

Filters should be cleaned annually and replaced when heavily contaminated.

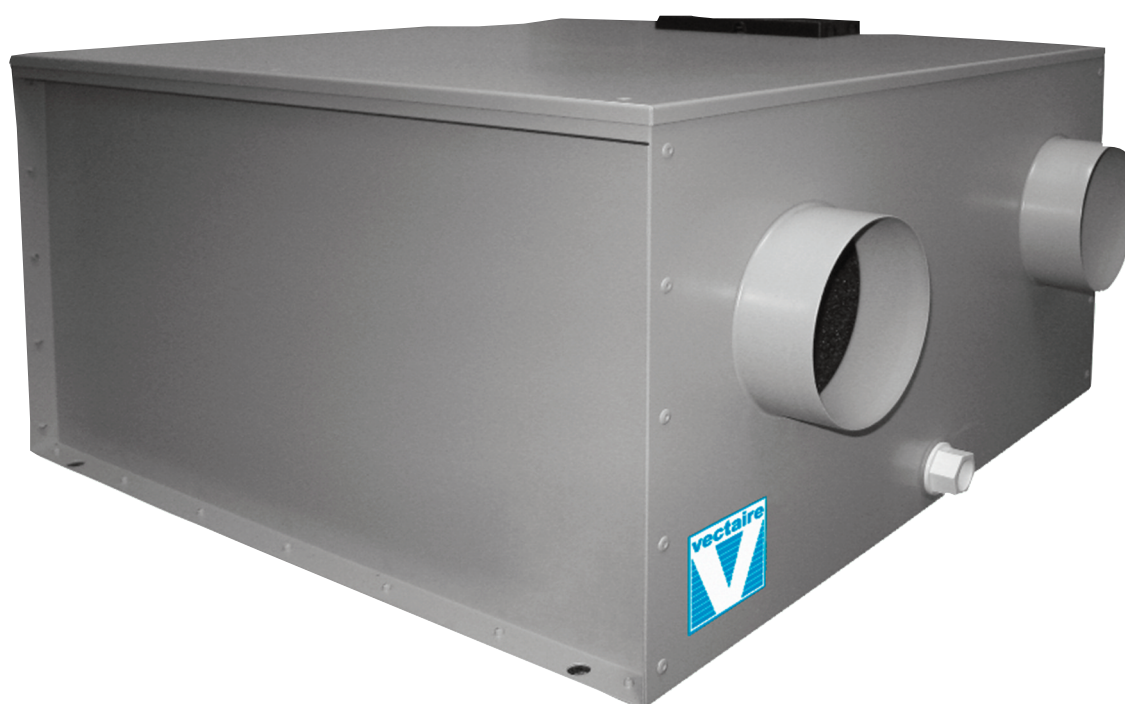
Replacement filters are available from Vectaire - call us on +44 (0) 1494 522333 or via sales@vectaire.co.uk

"WHHR100/90DC-B Plus"



**Whole House Heat Recovery Unit with Low Energy
DC Motor - for domestic and commercial use**

Installation, Operating and Maintenance Instructions



CE



"WHHR100/90DC-B PLUS" - WHOLE HOUSE HEAT RECOVERY UNIT INSTALLATION AND OPERATING INSTRUCTIONS

Safety Notice

It is important to read this Instruction Manual carefully before installing or using the product. Following these instructions will ensure that your ventilation system is installed, commissioned and used properly and continues to operate effectively. Vectaire will not be held responsible and will not accept liability for any damage caused to persons or property through failure to follow the guidance provided in this manual. It should always be available with the product for easy reference.

Your unit **SHOULD NOT** be switched off. It is designed to run continuously. If it is switched off indoor pollutant and moisture levels may increase.

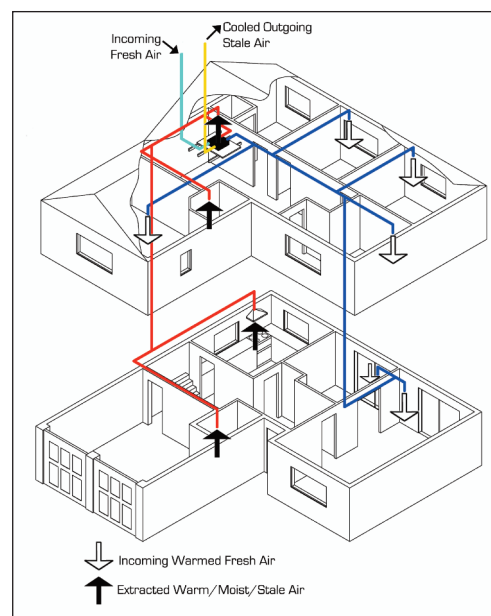
WHHR100/90DC-B Plus: 5"/125mm spigot, for dwellings up to 200m², max capacity 83 l/sec

General Information

The Vectaire WHHR100/90DC-B Plus heat recovery system provides whole house mechanical ventilation to living areas, bedrooms, kitchen and bathrooms. It extracts stale, contaminated air from kitchens, utility rooms and bathrooms, and uses the heat recovered from this air to warm fresh, incoming air to create a flow of fresh air throughout the dwelling. The extract and intake air streams are separated to avoid contamination.

Heat is reclaimed from extracted air and used, via the heat exchange process, to warm incoming fresh air. The system will operate continuously to create a stable, comfortable, healthy environment avoiding the use of excessive energy and saving heat already generated.

The heat recovery unit will generally be installed in the loft of a house or the void above the ceiling in an apartment (but may be installed in a cupboard) and will be connected by hidden ductwork to vents sited in the ceilings of the rooms which require ventilation. Each unit is commissioned individually allowing its performance to be tailored to suit the performance required. There will be a facility to boost the extraction rate when desired (e.g when cooking or bathing or pollutant levels rise). This may be done automatically or manually.



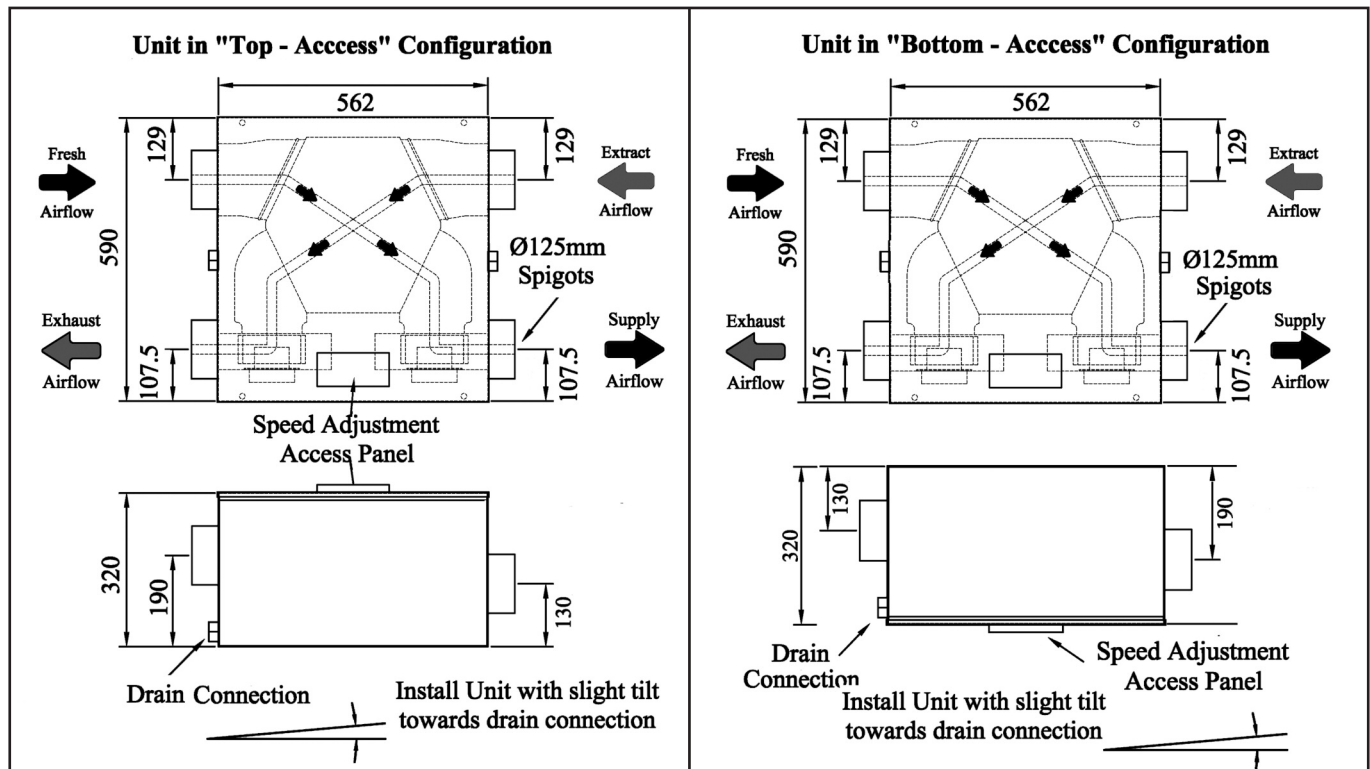
The system is designed to run continuously and should **NOT** be switched off except for maintenance or filter replacement.

Features

- **SAP PCDB Listed** whole house heat recovery unit giving continuous ventilation in the kitchen and up to four additional wet rooms (using rigid ducting)
- low noise levels
- variable choice low (trickle) speed and boost options for optimum setting at installation
- boost speed can be triggered by a switched live connection from a variety of external devices including:
 - PIRFF (passive infra red)*
 - DRH240 (dynamic remote humidistat)*
 - THM (thermostat)*
 - a light switch (if more than one light switch is used, **each one must be a double pole switch**)
 - a remote switch/pull cord

(*PIRFF, DRH240 and THM may have integral over-run timer which controls the length of time that the fan will continue to operate at its boost speed after the boost has been switched off.)

- Installation **MUST** be carried out by suitably qualified personnel and **MUST** be in accordance with current IEE regulations and all appropriate standards and applicable regulatory guidance.



Installation

IT IS IMPORTANT THESE INSTRUCTIONS ARE READ FULLY BEFORE INSTALLATION

- This product should not be used for any purpose other than that for which it was designed and as shown in this leaflet
- All packaging should be removed and the unit checked for damage in transit. If there is any damage, please contact your supplier
- The WHHR100/90DC-B Plus will generally be fitted into a loft or ceiling void. **In order to comply with Construction (Design & Management) Regulations, sufficient access for safe maintenance (recommended on an annual basis), or removal following installation, MUST be provided for this product. See dimensions above.**
- Fire Dampers **must be fitted** to duct work at appropriate locations in accordance with Building Regulations
- **Flue gases from fuel-burning equipment must not be drawn into a living area. If any room from which air is extracted contains a fuel burning appliance, such as a central heating boiler, then its flue must be of the sealed or balanced flue type, or allowance must be made for an adequate supply of air into the room.**
- The unit is designed for horizontal installation and should be fitted with 2° tilt towards the condensation drain used
- The unit must NOT be installed:
 - where there is excessive oil or grease
 - where there are hazardous gases, liquids or vapours that are flammable or corrosive
 - in ambient temperatures above 60°C or lower than 5°C
 - in humidity levels above 90% or in a wet environment
- Where possible the unit should NOT be installed directly above a bedroom or living room.
- The condensation drain must be fitted and if insulated, use the equivalent of at least 25mm of insulating material with a thermal conductivity of 0.04 W/[mK]
- Care should be taken to ensure that ducting is free from blockages before switching on the unit as this may invalidate your guarantee
- External grilles should be located a minimum of 600mm from any flue outlet in accordance with all Regulations
- The unit must be connected to a 230-240v, 50Hz single phase electrical supply.
- A triple pole isolation switch with contact separation of at least 3mm must be used to connect the appliance to the fixed wiring when using the Switched Live.
- The product should only be connected to the mains electricity supply or electrical outlet if:
 - your electrical voltage and frequency correspond to those shown on the rating label.
 - the capacity of your electricity supply is sufficiently powerful to operate the product at its maximum power
- If one of the spigots is not connected to ducting a safety grille **MUST** be fitted to that spigot, so that it is impossible for any moving part to be touched.
- This appliance is not suitable for installation on the outside of a building.

Installation of the appliance **MUST** be carried out by a qualified and suitably competent person and should be carried out in clean, dry conditions where dust and humidity are at minimal levels. It should only be installed after other building works have been completed and the building in which it is installed cleaned. Failure to comply with any of the above points will have an impact on the validity of the guarantee.



Duct and Duct Connections [refer to design drawing]

- 4 x 125mm nominal diameter spigots are provided for the connection of ducting. These are clearly marked for correct connection of the supply and exhaust ducts.
- Where ducting is installed in an unheated space, all of the ducts should be insulated. Where ducting is installed in a heated space, only the cold ducts should be insulated. i.e. the supply duct from outside and the extract duct from the unit to the outside.
- The duct layout must be designed to suit the requirements of the ventilation/recovery system and building lay-out. If the ducting passes through a fire wall/barrier, suitable fire dampers must be installed
- Where rigid duct is used, it should be installed using the least number of fittings to minimise air flow resistance. Where possible, final connection to the grilles and unit should be made with a flexible connection.
- Where flexible ducts are used, ensure that:
 - duct runs are kept as short as possible
 - the duct is stretched so that it is smooth and straight
 - where bends are necessary, they have large radii (ie avoid sharp bends)
 - the duct is not crushed if in a restricted area

Condensation

[The unit may sometimes produce condensation which must be drained away. A 15mm dia pipe outlet is provided on this unit].

- A 15mm dia pipe must be fitted to the pipe connection. If any part of the condensate drain is in an unheated space it **MUST** be insulated with the equivalent of at least 25mm of insulating material with a thermal conductivity of 0.04 W/(mK).
- The pipe must drain into the normal household drainage system.
- The drain must incorporate a wet or dry trap to prevent air penetration.
- The unit must be tilted towards the side carrying the condensation exit point. It should be installed horizontally with a 3° tilt towards the condensation drain used (equivalent of raising the opposite end by approximately 25mm).
- The drainage pipe must have a continuous fall from the unit to the drainage collection point.

Electrical Connection

WARNING: these appliances must be earthed and all wiring must conform to current IEE Regulations and all applicable standards and Building Regulations.

- The unit is suitable for 230V, 50Hz Single phase supply.
- The unit is supplied with a mains rated 4 core flexible cord (black, brown, grey and green/yellow)
- A triple pole isolation switch with contact separation of at least 3mm must be used to connect the appliance to the fixed wiring when using the Switched Live.
- Boost controls must not be located within 1 metre of a cooker or where they may be affected by excessive heat or moisture
- Boost controls should be clearly identified and conveniently located.
- The boost speed can be triggered by a switched live connection from:
 - PIRFF (passive infra red)*
 - DRH240 (dynamic remote humidistat)*
 - THM (thermostat)*
 - a light switch (if more than one light switch is used, **each one must be a double pole switch**)
 - a remote switch/pull cord

[*PIRFF, DRH240 and THM may have integral over-run timer which controls the length of time that the fan will continue to operate at its boost speed after the boost has been switched off.]



Commissioning

- The units operate by extracting hot, stale air from kitchens, WCs, bathrooms etc, and passing it into a heat exchanger and out to the atmosphere. Another fan draws in cool, fresh air and passes it through the same heat exchanger, where it is heated by the outgoing, stale air.
- When the unit is set up and running, the minimum setting on the speed control switch must relate to the designed volume air flow. The variable air flow from minimum to maximum allows the unit to extract a greater volume to cope with any increase in the build up of condensation or foul air, ie cooking etc.
- Before starting the commissioning procedure, refer to the design drawing for correct air flows.

N.B extract and supply air volumes will not always be equal. When setting up, therefore, the extract system should be the datum.

Installation of the appliance **MUST** be carried out by a qualified and suitably competent person and should be carried out in clean, dry conditions where dust and humidity are at minimal levels. It should only be installed after other building works have been completed and the building in which it is installed cleaned. Failure to comply with any of the above points will have an impact on the validity of the guarantee.

Commissioning Procedure

- Ensure that the exhaust and supply grilles or valves are fully open.
- Turn the electrical supply ON and set the fan speed control to trickle mode [switched live off].
- Check the airflow at the extract air valves or grilles and compare to the design value. If incorrect, adjust as follows:-
 - Turn the electrical supply off.
 - Remove the cover of the electrical control panel.
 - Adjust the potentiometer marked 'min' up or down as required. (See page 6)
 - Turn on the electrical supply and recheck the airflows.
 - Re-adjust as above, if necessary.
 - Make any final adjustments at the air valve by rotating the centre section.
- Switch the unit to boost mode by connecting the switched live. Measure the airflow and adjust the boost air flow by following the procedure above using the 'max' potentiometer. (Do not make any further adjustments at the air valve).
- Replace the controller cover.

Cleaning and Maintenance

WARNING: The unit uses a 230V supply and contains rotating mechanical parts.

- **Before carrying out any maintenance or cleaning operations the mains electrical supply MUST be disconnected.**
- **Heat Exchanger maintenance must be done professionally. Contact Vectaire Service Department for Advice.**
- The air filters of the Vectaire WHHR100/90DC-B Plus should be cleaned regularly by a suitably qualified person (the frequency of cleaning will vary depending on the installation environment).

To clean the filters

- Remove the main access panel
- Remove the rubber inserts from the filter slots (where fitted) and slide out the filters from the internal mouldings.
- Clean the filters carefully using a vacuum cleaner and refit.
- Replace the rubber inserts into the slots.
- Replace the access panel and ensure it is securely located.
- Power to the unit can now be restored.

Filter Replacement

Filters should be cleaned annually and replaced when heavily contaminated.

Replacement filters are available from Vectaire - call us on +44 (0) 1494 522333 or via sales@vectaire.co.uk

